

The path to

Wilder 2030

Our strategic plan



Derbyshire
Wildlife Trust

Wilder by nature

Nature connects us all.
It shapes our landscapes.
Nurtures our communities.
It's where we find adventure.
And where we go to escape.

But nature needs our help.
We need more untamed spaces.
More ways for wildlife to thrive.
And all of us to make it happen.

It'll take bold ideas.
An abundance of energy.
And unwavering belief.

But we're all up for the challenge.
We're **wilder by nature.**



Our **vision** is simple:

A wilder Derbyshire.

Where people and wildlife
thrive together.

And our **mission** is clear:

Inspiring and enabling bold,
transformative action, where
everyone plays their part to
make it happen.





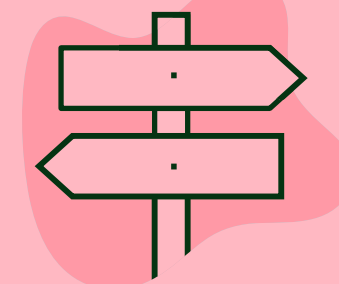
By 2030, we aim to:



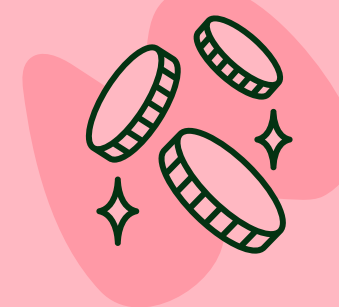
rewild 100,000 acres
of land and water



reintroduce pine marten,
black grouse and white stork



support 250 communities
to lead nature recovery in
their own neighbourhoods



grow a greener, fairer
economy with people, wildlife
and climate at its heart

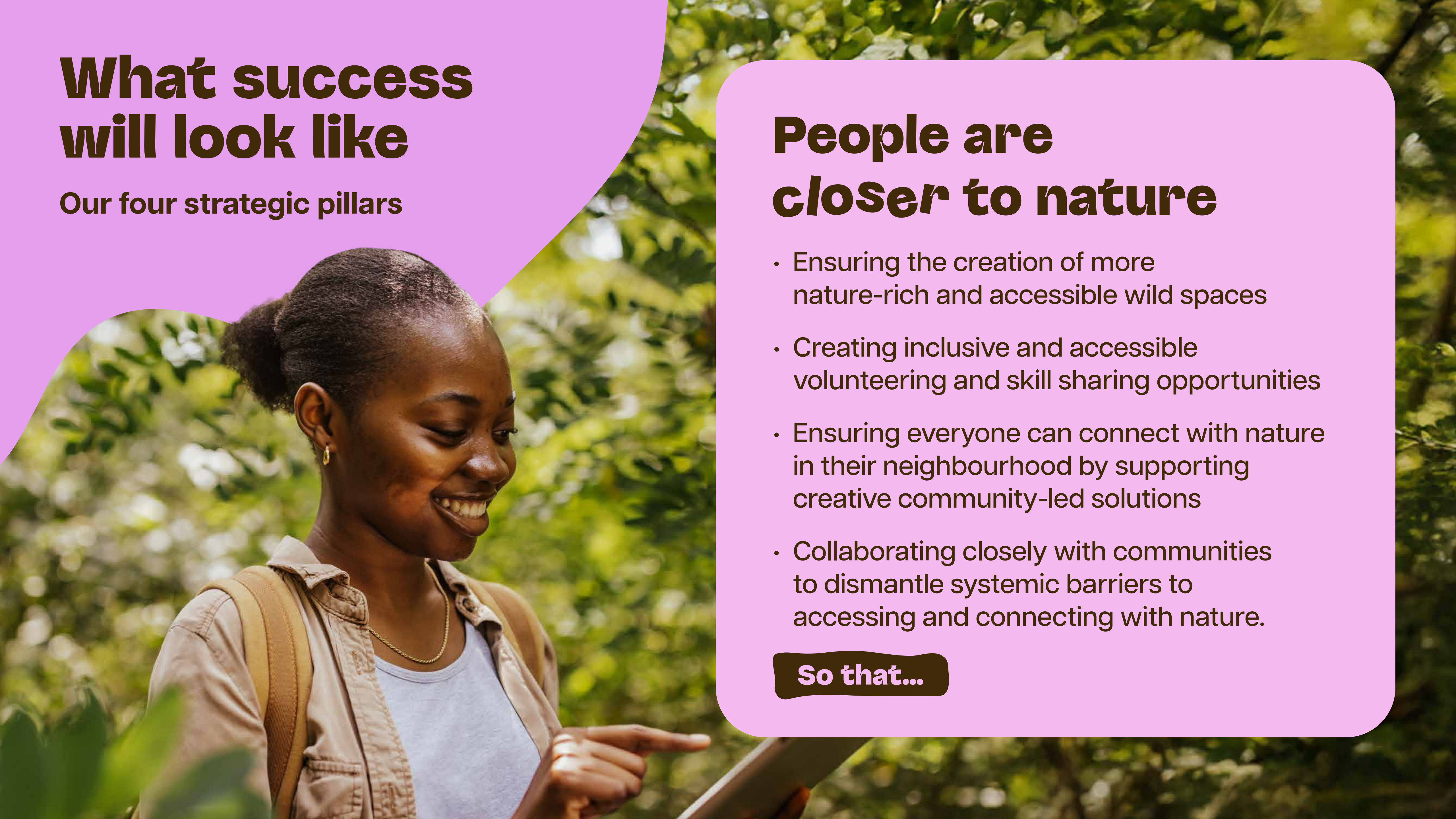
What success will look like

Our four strategic pillars

People are *closer* to nature

- Ensuring the creation of more nature-rich and accessible wild spaces
- Creating inclusive and accessible volunteering and skill sharing opportunities
- Ensuring everyone can connect with nature in their neighbourhood by supporting creative community-led solutions
- Collaborating closely with communities to dismantle systemic barriers to accessing and connecting with nature.

So that...



People take action for wildlife

- Building diverse, sustainable and resilient networks that drive transformative change
- Supporting a stronger, more joined-up voice for nature
- Telling stories of activism, action and hope
- Championing and supporting community-led rewilding.

So that...





There is more space for nature, and more people benefiting from nature

- Supporting the delivery of landscape-scale change to create more space for nature
- Delivering evidence-led rewilding and reintroductions
- Delivering and campaigning for natural solutions that address the biodiversity and climate crises
- Advocating for wildlife friendly and climate resilient developments.

So that...

Wildlife and people *thrive together*

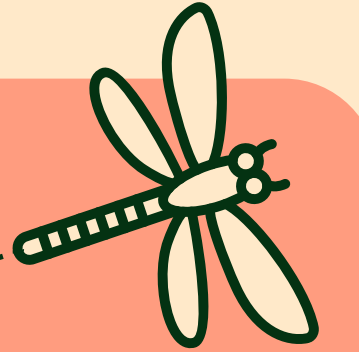
- The current declines in nature and community wellbeing are reversed
- Wildlife and communities flourish and thrive together
- People are closer to nature, driving an ever more inclusive cycle which continually strengthens connections and creates a wilder and better society for generations to come.



How we'll get there

Our strategic transformation plan

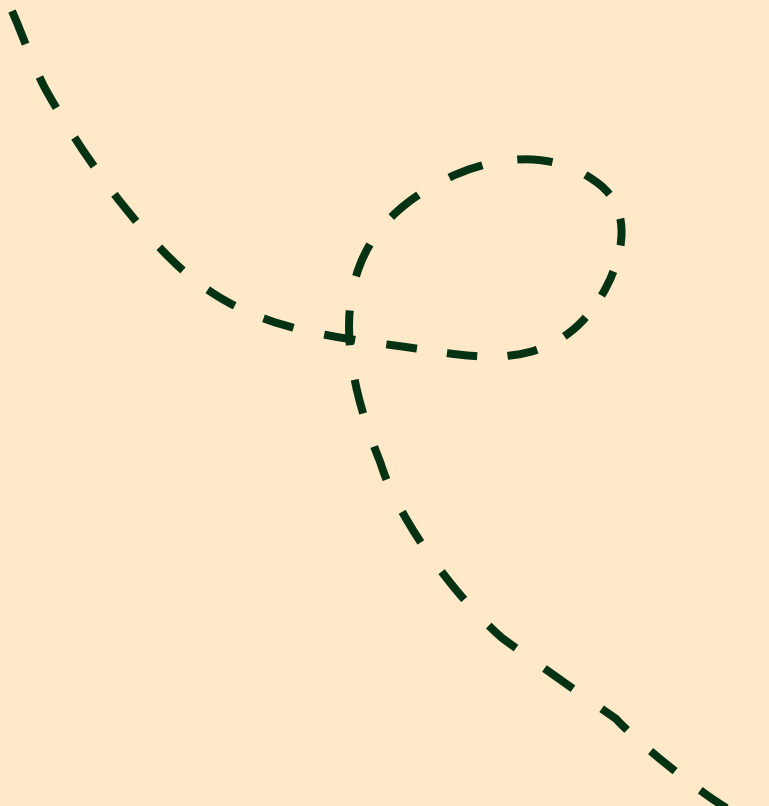
Developing green skills



- Attracting, developing, and retaining talent
- Creating a centre of excellence for community-led rewilding and evidence
- Developing innovative partnerships which support green skills and green skills development.

Pioneering a nature-based economy

- Piloting transformative economic models that prioritise biodiversity and equity
- Identifying and securing new and innovative income streams for nature's recovery
- Enabling others to create wildlife-rich places which generate income from rewilding, nature-based solutions, and nature's recovery.



Building equity into everything we do

- Challenging and addressing deep-rooted inequalities in the environment sector
- Advocating for racialised and marginalised communities
- Delivering justice-driven, community-centred decision making which integrates the voices of marginalised groups.



Improving our resilience and impact

- Ensuring we are financially and operationally resilient in an increasingly uncertain world
- Future proofing our organisation and our systems and processes within a landscape of ever-changing technologies and economic & political uncertainty
- Reducing our Carbon Footprint.



Our priority landscape recovery areas

Wild Peak

A wild and inclusive
National Park.

Wilder Derby

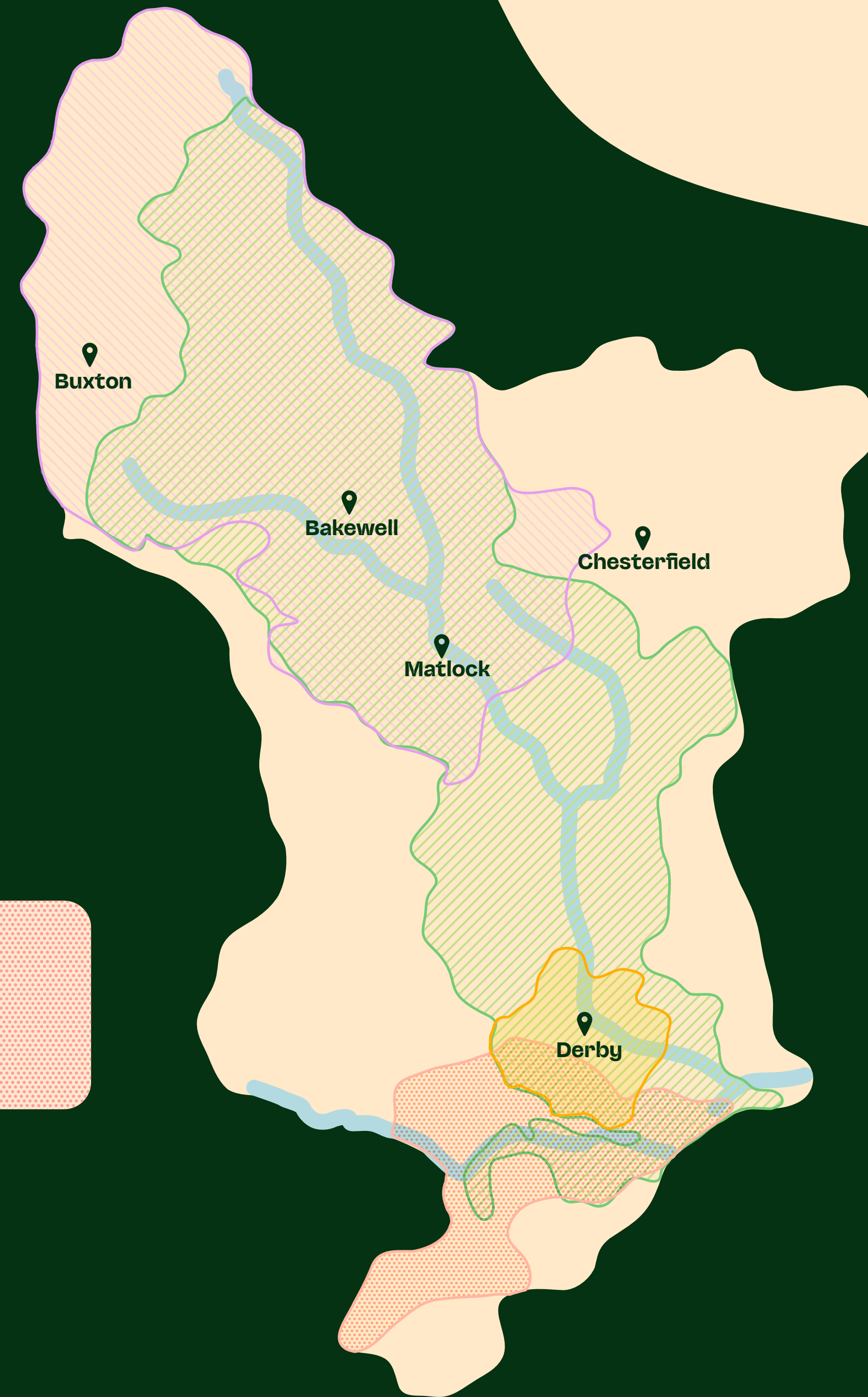
The UK's
Greenest City.

Wild Derwent Forest

Linking the National and
Northern Forests.

Wilder Trent

A nationally significant wetland
landscape from source to sea.



**We're
collaborative**



Always listening, inspiring
and sharing knowledge.

**We're
curious**



Endlessly exploring,
discovering and learning.

**We're
courageous**



Forever standing up
for what's right.

And we're always

**wilder
by nature**



Derbyshire
Wildlife Trust