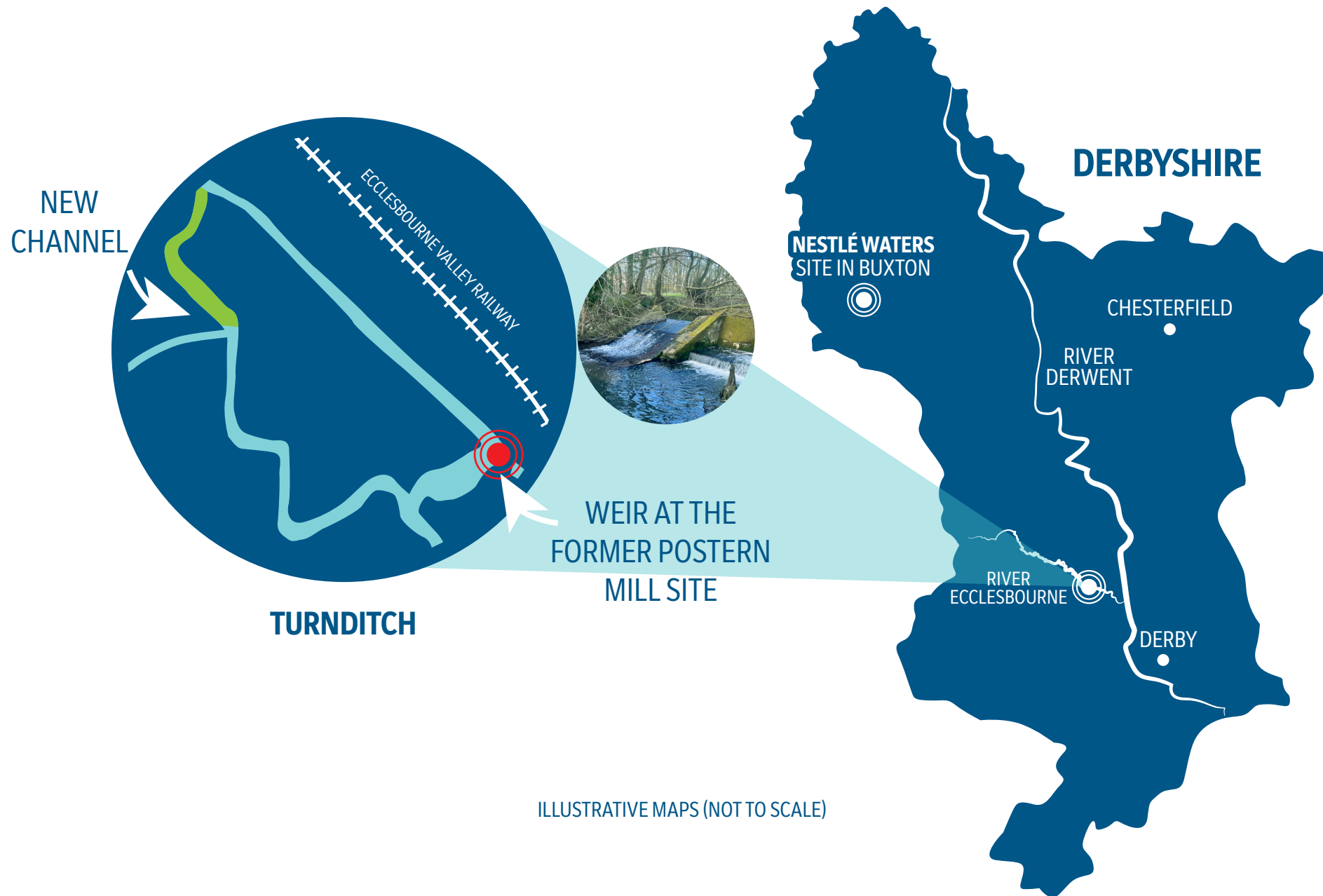
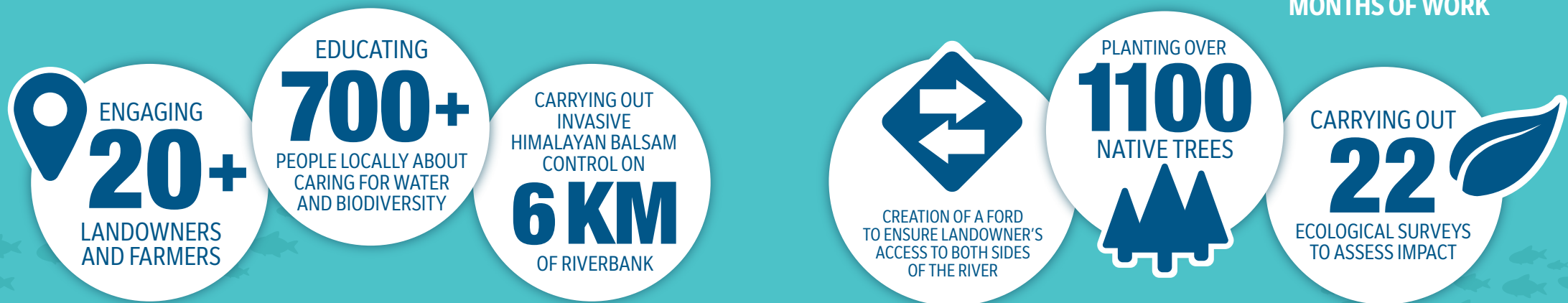


# RESTORATION OF THE RIVER ECCLESBOURNE'S NATURAL HABITAT

EXCAVATION OF 1 NEW CHANNEL TO RE-MEANDER THE RIVER BACK TO ITS ORIGINAL ROUTE AND BYPASS A WEIR, CREATING A BARRIER-FREE FISH PASSAGE

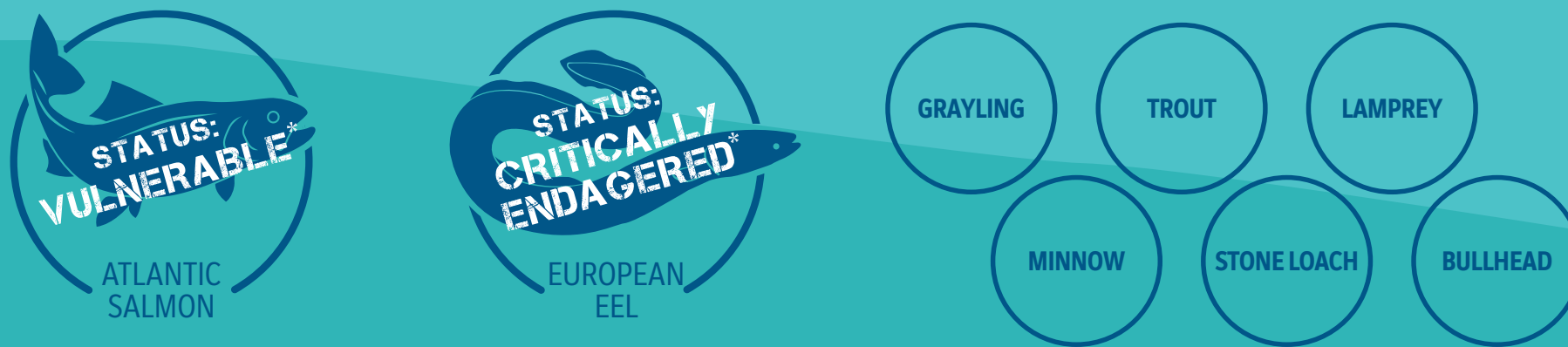


ILLUSTRATIVE MAPS (NOT TO SCALE)



## WHAT WE'LL ACHIEVE

28KM OF THE RIVER AND ITS TRIBUTARIES ACCESSIBLE TO AT LEAST 8 NATIVE FISH SPECIES TO RE-COLONISE



\*ACCORDING TO INTERNATIONAL UNION FOR CONSERVATION OF NATURE

HELP ATLANTIC SALMON RETURN TO PARTS OF DERBYSHIRE AFTER MORE THAN 100-YEAR ABSENCE  
8 COMMUNITY GROUPS AND SCHOOLS EMPOWERED TO TAKE POSITIVE ACTION AFTER THE PROJECT ENDS



IMPROVING WATER QUALITY



ENHANCING BIODIVERSITY



ENRICHING THE ECOLOGICAL STATUS OF THE RIVER