

The Derbyshire Derwent Catchment Partnership Annual Event

A day to inspire, enthuse & inform



10:00 – 16:00

The Medway Centre, Bakewell
Thursday 28 January 2016

Workshop objectives

By the end of the day we will have:

1. Had the opportunity to network, debate and share ideas with a wide number of individuals and organisations who have a passion for the Derbyshire Derwent Catchment;
2. A better understanding of the Derbyshire Derwent Catchment Partnership achievements to date;
3. Been updated on a range of initiatives taking place within the catchment;
4. Begun to develop the detail of some potential new projects within the catchment.

Agenda

Time	Session
10:00	Welcome & introductions
	The Derbyshire Derwent Catchment Partnership – <i>the story so far</i>
	Mapping the Derwent
	Catchment Catch-ups – <i>including a break for refreshments & networking</i>
13:00	Lunch & networking – <i>Optional 'Fish Walks'</i>
	Review & reflect
	Partnership & External funding
	Developing projects for the future
	Next steps
16:00	Depart



Derbyshire
Wildlife Trust

Derbyshire Derwent Catchment Partnership

The story so far...

Kath Stapley

www.derbyshirewildlifetrust.org.uk

Defending wildlife, restoring landscapes, inspiring people



Derbyshire Wildlife Trust

Water Framework Directive (WFD)

European legislation which requires all member states to improve the ecological status of their water bodies by 2027. It aims for 'good status' for all ground and surface waters (rivers, lakes, transitional waters, and coastal waters) in the EU.

River Basin Management Plans (RBMPs) are a requirement of the Water Framework Directive and a means of achieving the protection, improvement and sustainable use of the water environment across Europe.

The Humber River Basin Management Plan is a 6 year strategic plan.

www.derbyshirewildlifetrust.org.uk

Defending wildlife, restoring landscapes, inspiring people



Derbyshire Wildlife Trust

England

10 river basins



www.derbyshirewildlifetrust.org.uk

Defending wildlife, restoring landscapes, inspiring people



Derbyshire Wildlife Trust

Humber River Basin

15 catchments



www.derbyshirewildlifetrust.org.uk

Defending wildlife, restoring landscapes, inspiring people



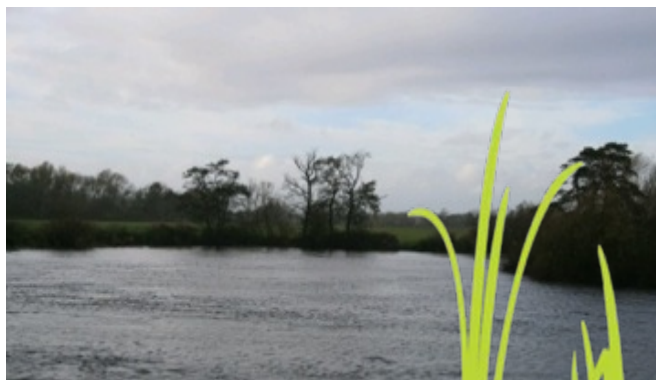
Derbyshire Wildlife Trust

Derbyshire Derwent Catchment Partnership

Established in 2014

One of 108 Catchment Partnerships
in England

Area of 1061km²



www.derbyshirewildlifetrust.org.uk

Defending wildlife, restoring landscapes, inspiring people



Derbyshire Wildlife Trust

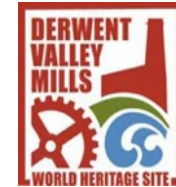
Over 40 partners



DERBY CITY COUNCIL



National Trust



trent rivers trust



DERBYSHIRE County Council
Improving life for local people



Amber Valley Borough Council



Trent & Peak ARCHAEOLOGY



friends of MARKEATON BROOK



British Geological Survey

NATURAL ENVIRONMENT RESEARCH COUNCIL



MATLOCK CANOE CLUB



NATURAL ENGLAND



SEVERN TRENT WATER



PEAK DISTRICT NATIONAL PARK



CAMPAIGN FOR THE FARMED ENVIRONMENT



Derwent Fly Fishing Club



CHATSWORTH

LANDSCAPE RESEARCH & MANAGEMENT



www.derbyshirewildlifetrust.org.uk

Defending wildlife, restoring landscapes, inspiring people



Derbyshire Wildlife Trust

Vision for the Derbyshire Derwent Catchment Partnership

To create and protect a healthy and wildlife rich water environment within the Derbyshire Derwent Catchment, that will bring social, well-being and economic benefits to all.

www.derbyshirewildlifetrust.org.uk

Defending wildlife, restoring landscapes, inspiring people



Derbyshire Wildlife Trust

Pollution



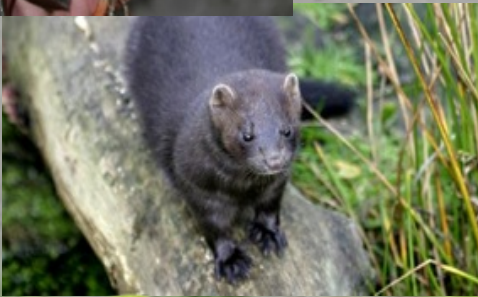
www.derbyshirewildlifetrust.org.uk

Defending wildlife, restoring landscapes, inspiring people



Derbyshire Wildlife Trust

Biodiversity



www.derbyshirewildlifetrust.org.uk

Defending wildlife, restoring landscapes, inspiring people



Derbyshire
Wildlife Trust

Climate change



www.derbyshirewildlifetrust.org.uk

Defending wildlife, restoring landscapes, inspiring people



Derbyshire Wildlife Trust

Communication and Engagement



www.derbyshirewildlifetrust.org.uk

Defending wildlife, restoring landscapes, inspiring people



Derbyshire Wildlife Trust

Catchment Partnership Objectives

- 1) Adopt a collaborative approach to the development of interventions to improve the catchment's urban and rural water environment.
- 2) Support community action and educational initiatives to improve the water environment and where appropriate support increased access to new and existing public footpaths and public open spaces.

www.derbyshirewildlifetrust.org.uk

Defending wildlife, restoring landscapes, inspiring people



Derbyshire Wildlife Trust

Catchment Partnership Objectives

- 3) Improve biodiversity within the catchment by habitat management and creation and management of non-native invasive species.
- 4) Consider the impact of climate change on the environment and ways to manage and mitigate this, particularly in the World Heritage Site Core and Buffer Zones.
- 5) Influence and support sustainable development in urban areas to deliver multiple benefits, including climate change adaptation and mitigation.



Derbyshire Wildlife Trust

Projects in the catchment

Severn Trent Environmental
Protection Scheme

DerwentWISE

Ecclesbourne Project

Mercaston & Markeaton Brooks Project

Our City Our River

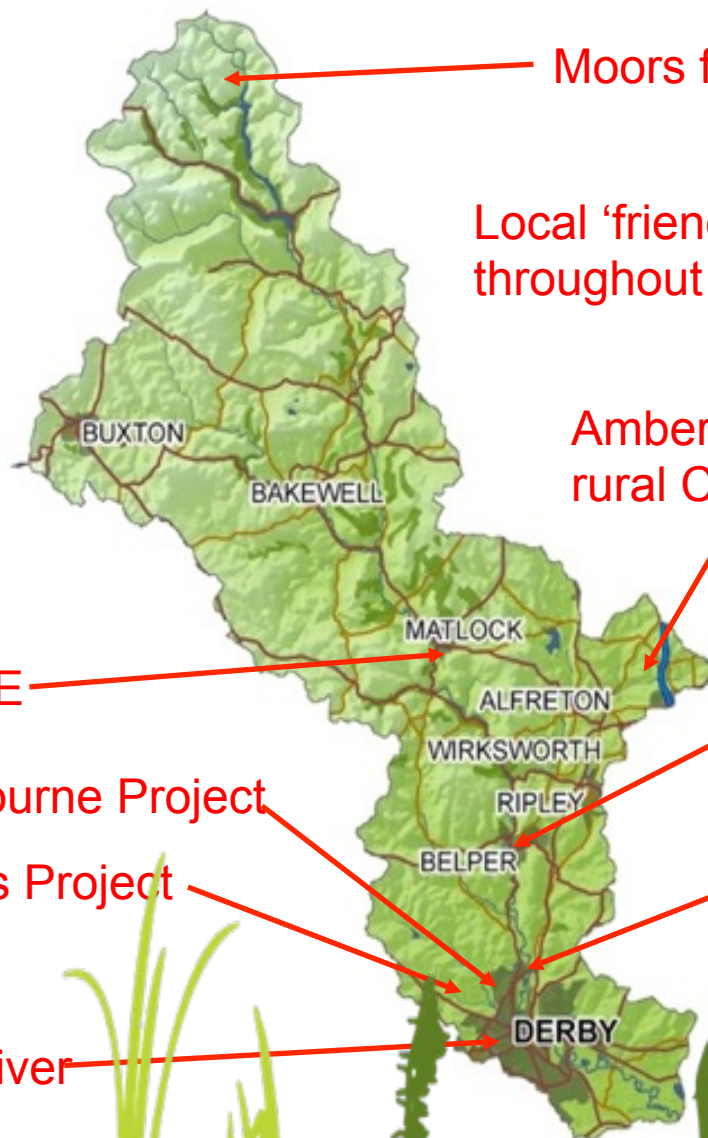
Moors for the Future

Local 'friends of' groups
throughout the catchment

Amber Jewel and
rural CPAF project

Strutts Rain
Garden

Darley Abbey
fish pass



www.derbyshirewildlifetrust.org.uk

Defending wildlife, restoring landscapes, inspiring people



Derbyshire Wildlife Trust

Video of the Derbyshire
Derwent catchment



www.derbyshirewildlifetrust.org.uk

Defending wildlife, restoring landscapes, inspiring people





Derbyshire Wildlife Trust

Branding for the Derbyshire Derwent Catchment Partnership



Nene Catchment Partnership



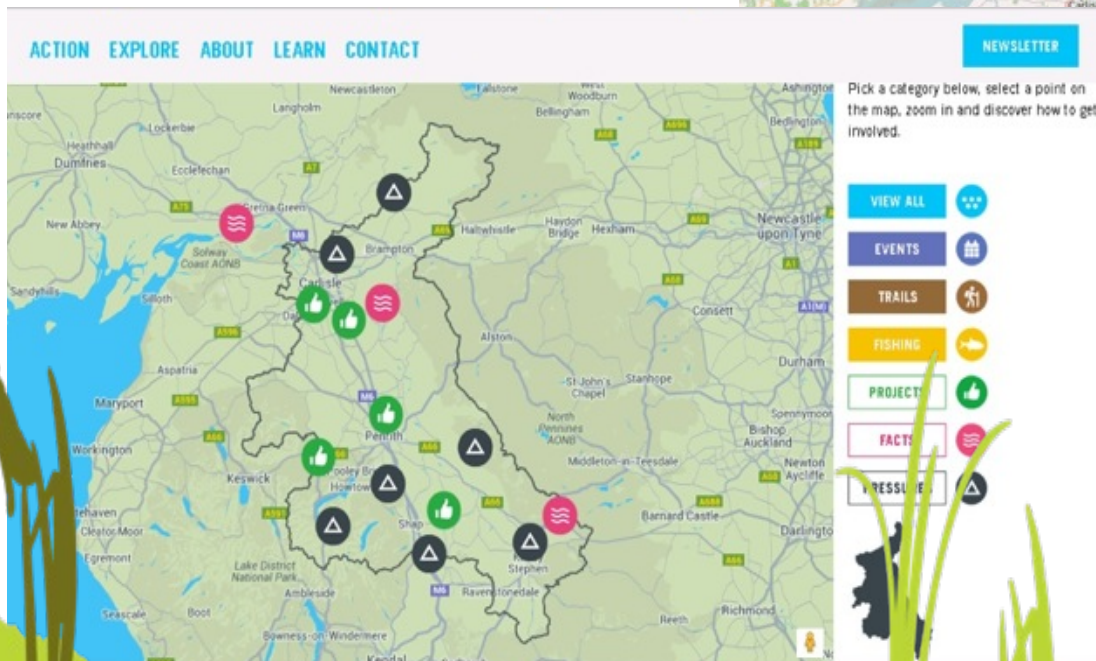
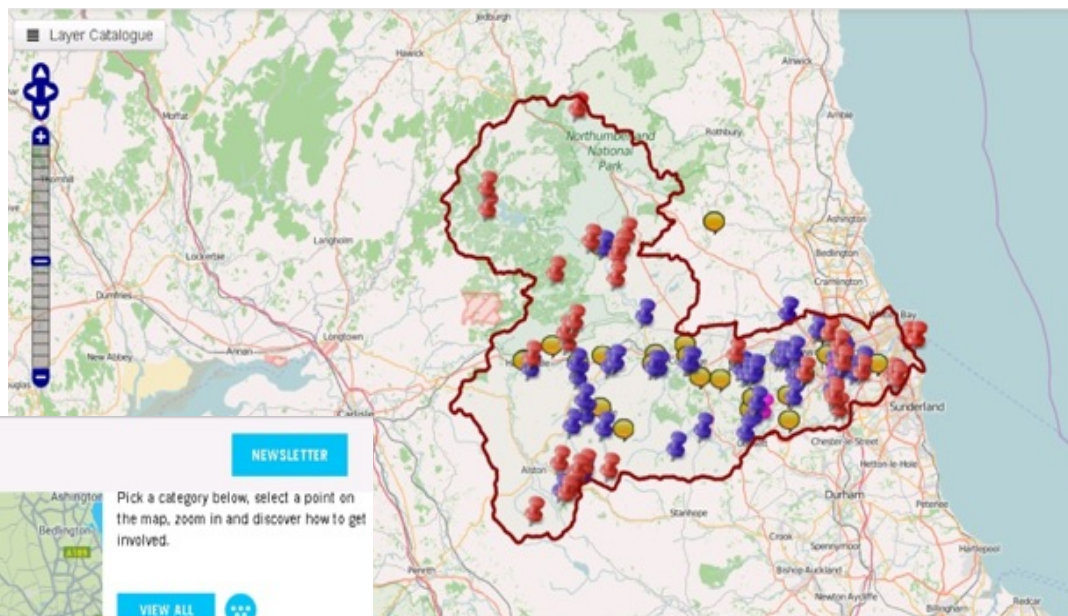
www.derbyshirewildlifetrust.org.uk

Defending wildlife, restoring landscapes, inspiring people



Derbyshire Wildlife Trust

Interactive map



www.derbyshirewildlifetrust.org.uk

Defending wildlife, restoring landscapes, inspiring people



Derbyshire Wildlife Trust

Future projects

What do we need to improve?

Which locations are a priority?

How can your organisation contribute?

Which other partners should be involved?



www.derbyshirewildlifetrust.org.uk

Defending wildlife, restoring landscapes, inspiring people





Derbyshire Wildlife Trust



www.derbyshirewildlifetrust.org.uk

Defending wildlife, restoring landscapes, inspiring people

Partnerships & External Funding

*Ed Clegg, European Funding Advisor
Environment Agency*

Derbyshire Derwent Catchment Partnership Annual Event

Partnership and External Finding –
what's out there and how to get it

Ed Clegg
Partnership Funding Advisor
National Partnership Funding Team

28th Jan 2016

What's out there?

- ➡ Big / Small
- ➡ Heritage/ Biodiversity/ Research/
Economic
- ➡ Charitable Trusts
- ➡ Lottery funding: HLF & BIG
- ➡ Landfill Community Fund
- ➡ European funding

Photo: Foxlake, Courtesy of David Lockhead.

Enrolling as an Environmental Body (EB)

Find out how to enrol as an Environmental Body with ENTRUST...

Photo: Micham Lane Baptist Church Garden of Discovery, Courtesy of Veggie Environmental Trust.

Landfill Communities Fund (LCF)

Find out more about the LCF...



Photo: Brandon Marsh, Coventry, Courtesy of Helen McCarthy-Deeks.

Finding Funding

Find out about the two ways of accessing Landfill Communities Fund (LCF) monies

Photo: New Shoots Permaculture Project, Courtesy of New Shoots Permaculture Association.

Statistics

See all of the facts and figures about the Landfill Communities Fund (LCF)...

Photo: John Smith Playing Field, Courtesy of SITA 2008.

Training

Book for one of our upcoming training events

A lasting difference for heritage and people

Using money raised through the National Lottery, the Heritage Lottery Fund (HLF) gives grants to sustain and transform our heritage. From museums, parks and historic places to archaeology, natural environment and cultural traditions we invest in every part of our diverse heritage.



A disused lighthouse on the most isolated spot on the Yorkshire coast is set to be restored

News



- Heritage Lottery Fund statement – The 2014 Real Poppy Campaign

- Turner's house gets green light for restoration

Sharing Heritage



Quick links

- Understanding the First World War
- What do we fund?
- Our grant programmes
- Subscribe to our eBulletin
- Our publications
- Press team contacts

Tweets

[Follow](#)

Heritage Lottery
@heritagelottery

17m

BBC News - Bovington Tank
Museum vehicle conservation



First World War
Centenary: one year
to go



Glasgow project
wins Best Heritage
project



Iconic gateway to
the park restored



Repairing UK's
historic places of
worship



Living North Sea

Fish Migration...
from sea to source

The Interreg IVB
North Sea Region
Programme

Investing in the future by working together
for a sustainable and competitive region

[Home](#)[The North Sea](#)[Fish Migration](#)[About LNS](#)[LNS Partners](#)[WebGIS](#)[News](#)[Download](#)[Events](#)[Intranet](#)[NING Forum](#)<http://livingnorthsea.ning.com/>[LinkedIn](#)[LNS LinkedIn Network](#)[Meld hier uw vangst!](#)

Welcome to Living North Sea website

'Free fish migration from sea to source' is the aim of this new collaboration between seven countries around the North Sea region. Once known for its rich fish population the North Sea is now suffering from intensive fish practices and rivers connected with the North Sea are blocked with man-made barriers.

Many fish species live in both fresh and salt water to fulfil their lifecycle, such as sea trout, salmon and eel. If the cycle is not complete they will become extinct and this is exactly what has happened in many places around the North Sea. If nothing changes, more species will disappear. Hence there is need to take preventative measures to facilitate free fish migration or fish-friendly barriers across regions around the North Sea.

The **Living North Sea** project aims to focus on key issues and solutions for fish migration. The team consists of fifteen partners working on reconnecting the rivers and deltas around the North Sea region. The project is partly funded by the European Interreg North Sea program.


[Home](#) > [News](#) > [News Archive](#) > Largest award ever given by EU LIFE Programme to a UK conservation project

News

News Archive

Latest News

Six moorland sites the focus of winter works

Turning a climate catastrophe into a climate change solution

The hunt is on for life saving moss

Largest award ever given by EU LIFE Programme to a UK conservation project

Transforming the backbone of England – from bare black peat to lush green vegetation

Largest award ever given by EU LIFE Programme to a UK conservation project

06 October 2015

World-leading moorland partnership receives €16 million support

The Moors for the Future Partnership, which works to protect priority international habitats in the Peak District and South Pennines, has received 16 million euros to deliver the MoorLIFE 2020 project.



This includes €12 million from the EU's LIFE fund - which supports environmental, nature conservation and climate action projects throughout Europe - the largest award ever given to a UK-based project.

The Project, hosted by the Peak District National Park Authority, is supported by partners including three major utility companies Severn Trent Water, United Utilities and Yorkshire Water, who have each made significant contributions to the project's €16 million total.

The money will enable the team to continue the progress that has been made over the past 12 years, protecting huge areas of the internationally important South Pennine Moors.

Sarah Fowler, Chief Executive of the Peak District National Park, said: "This is a massive vote of confidence in our work in the Peak District and South Pennines. The project will deliver landscape scale works as well as leading the way in researching and developing innovative

Photo Competition



Browse the shortlist for our 2015 Community Science photographic competition. Winner will be announced soon!

[See shortlist](#)

Social Media


[Follow us](#)

How to get it

- ⇒ Intelligence – alerts, networks, collective partnership experience
- ⇒ Know your funder
- ⇒ Plan – project for a project
- ⇒ Pipeline
- ⇒ Timeline

Guidance Notes Jan 2016

<http://www.catchmentbasedapproach.org/discussions/caba-funding-advice-notes>



Signposts to Funding

To help deliver catchment improvements



Helping to deliver catchment improvements

Advice Note 2 - Applying to Charitable Trusts



Helping to deliver catchment improvements

Advice Note 3 - Applying for Landfill Communities Fund



Helping to deliver catchment improvements

Advice Note 1 – Preparing your project



Helping to deliver catchment improvements

Advice Note 4 - Applying for Lottery Funds



Helping to deliver catchment improvements

Advice Note 5 – Application Checklist

FUNDING CENTRAL

The smart guide to over 4,000 grants, contracts and loans



Funded by:
 **CabinetOffice**
Office for Civil Society



Grant

[Better Derbyshire Dales Fund](#)

Max. Value: £ 5,000

Deadline: 01 Feb 2016

Grants are available to support the work of new or existing community and voluntary groups or organisations that are working within the Derbyshire Dales to develop or strengthen communities and people's health and well-being.

Matches saved search: Your personal profile

Updated



Grant

[Storm Eva Flood Relief Appeals: Government Match Funding](#)

Max. Value: Discretionary

Match funding is available from the government to charities that are running appeals in areas affected by flood damage from Storm Eva.

Matches saved search: Your personal profile



Grant

[Lancashire Pennine Moors LEADER Programme 2015-2020](#)

Max. Value: Discretionary

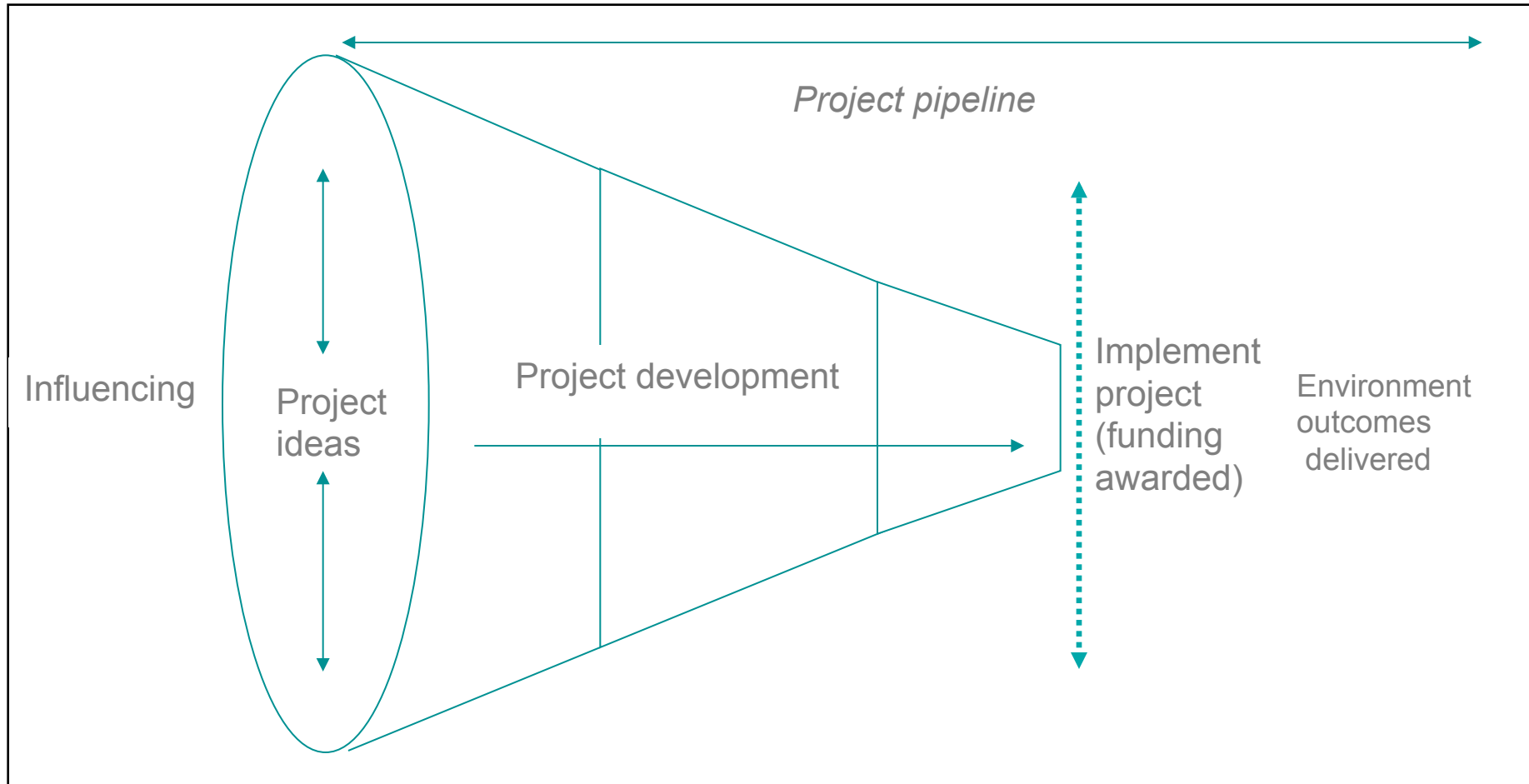
Deadline: 31 Jan 2016

Financial assistance is available for farmers, foresters, rural businesses, social enterprises and community organisations based in the Lancashire Pennine Moors LEADER area.

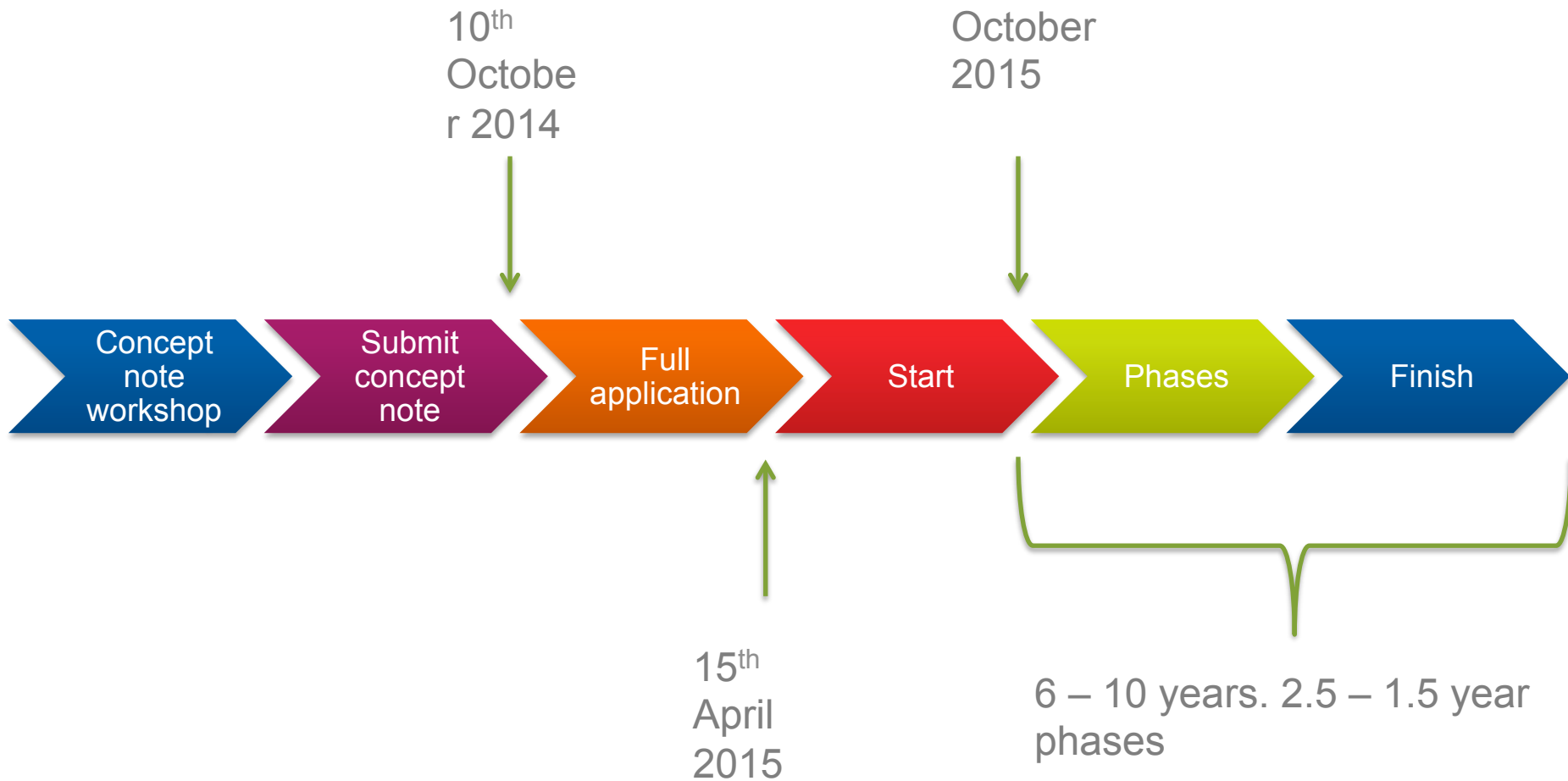
Matches saved search: Your personal profile



Project Pipeline



Timeline



Derbyshire Derwent Catchment Partnership Annual Event

Partnership and External Finding –
what's out there and how to get it

Ed Clegg
Partnership Funding Advisor
National Partnership Funding Team

28th Jan 2016

Next steps



Derbyshire Wildlife Trust

Next steps...

Projects

Review

Information gathered from partners

Identify partners with specific skills

Decide on programme of projects to take forward

Develop

Set up working groups for each project

Find ways to fund work

Deliver

Maintain momentum of group to get project to delivery stage



Derbyshire Wildlife Trust

Next steps...

Communication

Review	Assess feedback from event on how communication can be improved
Develop	Consider new ways to inform and engage the wider partnership
Deliver	Provide better access to information about the work of the Derbyshire Derwent Catchment Partnership

*Please fill in your
evaluation forms!*

www.derbyshirewildlifetrust.org.uk

Defending wildlife, restoring landscapes, inspiring people



Derbyshire Wildlife Trust



DERBY CITY COUNCIL



National Trust



trent rivers trust

Keep working together!



Improving life for local people



Amber Valley Borough Council



Trent & Peak ARCHAEOLOGY



friends of MARKEATON BROOK



British Geological Survey

NATURAL ENVIRONMENT RESEARCH COUNCIL



PEAK DISTRICT NATIONAL PARK

CAMPAIGN FOR THE FARMED ENVIRONMENT



Derwent Fly Fishing Club



CHATSWORTH

LANDSCAPE RESEARCH & MANAGEMENT



www.derbyshirewildlifetrust.org.uk

Defending wildlife, restoring landscapes, inspiring people