

CATCHMENT PARTNERSHIP

A year of real progress...

Kath Stapley
(Derbyshire Wildlife Trust)

and

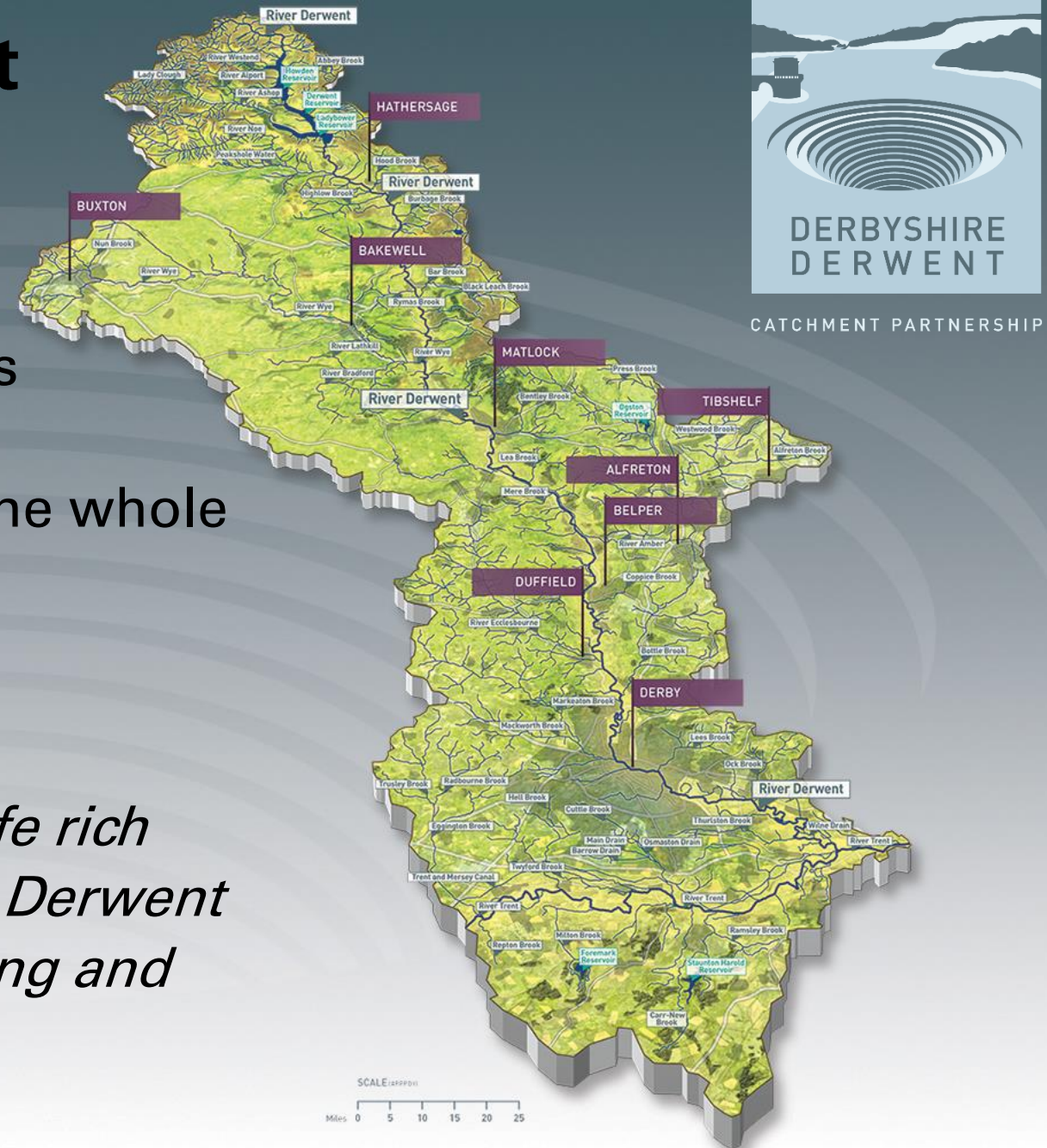
Amanda Patterson (Environment Agency)

Derbyshire Derwent Catchment Partnership

- Established in 2014
- One of over 100 catchment partnerships in England
- Partners working together to improve the whole catchment

Vision:

To create and protect a healthy and wildlife rich water environment within the Derbyshire Derwent Catchment, that will bring social, well-being and economic benefits to all.



Key issues

Pollution



Biodiversity



CATCHMENT PARTNERSHIP

Climate change



Communication and Engagement

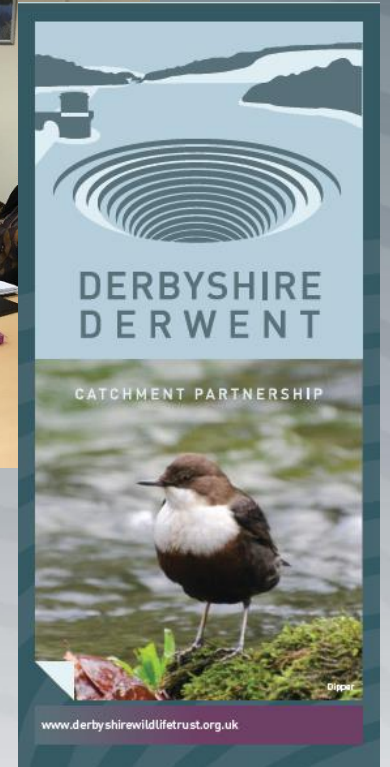


Catchment Partnership Progress 2016-2017

- Development of identity and purpose
- Logo, branding and interactive map
- Catchment film
- Focus groups
- New projects developed
- Funding secured for projects
- Delivery of projects
- Now over 60 partners involved in the catchment partnership

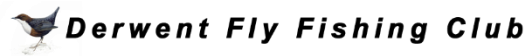
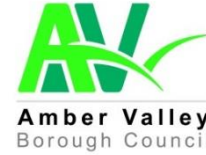


CATCHMENT PARTNERSHIP





Derbyshire
Wildlife Trust



New partners...



Turnditch Orchard Project



Hilcote
Environment &
Leisure
Project



Friends of Ripley Greenway



Clean Rivers Trust

Cressbrook & Litton Flyfishers Club Ltd

Amber

£50k from Biffa for wetland creation and restoration

£60k from Esmée Fairbairn

Working with farmers to make watercourse improvements

Severn Trent Environmental Protection Scheme



CATCHMENT PARTNERSHIP



Ecclesbourne

£27k for the Ecclesbourne Way from seven funders to create an 11-mile walking route with interpretation

Severn Trent Environmental Protection Scheme

Tributary surveys with Derby University and Derbyshire Wildlife Trust trainees



CATCHMENT PARTNERSHIP



In Duffield, the Ecclesbourne meets the River Derwent, which eventually flows into the Humber Estuary and the



Natural Flood Management

Gully blocking, sphagnum planting, woody debris dams, clough woodland planting

Removal of Himalayan balsam

Review of current data and how it can be used to find opportunities for Natural Flood Management across the catchment



CATCHMENT PARTNERSHIP



Water voles

Training in survey techniques

Development of apps

Working in partnership to share and collate data

Identifying key sites for habitat improvements and creation, mink control, etc.



© Christine Gregory



© Jack Perks



CATCHMENT PARTNERSHIP

Bottle Brook

Possible future interventions:

- Bank side improvements
- Biodiversity improvements
- Potential to de-culvert 100m of stream
- Several areas with a potential to deliver natural flood risk management

Next steps

- Identify land owners
- Develop a project plan
- Apply for funding



Derby

Possible future interventions:

- River de-culverting and improvements to open rivers
- Improvements to wildlife areas
- Pollution prevention campaigns
- Public and school engagement
- Managing surface water with sustainable drainage
- Natural Flood Management

Next steps

Develop a landscape scale project for Derby which can utilise current funding and bring in new funding streams



CATCHMENT PARTNERSHIP



White Peak

Development of a vision and joint objectives that will deliver environmental improvements throughout the White Peak

£20k from Environment Agency and Natural England

Next steps

- Development of a strong vision for the Partnership
- Capture key partner objectives
- Develop a project brief
- Scope out an Action Plan



CATCHMENT PARTNERSHIP

Derbyshire Derwent CaBA Partnership

A series of interactive maps presenting the data and evidence underpinning the partnership's catchment management plan. The last tab shows the actions which the catchment partnership are undertaking to tackle pollution, enhance biodiversity, manage climate change and improve ecological quality.

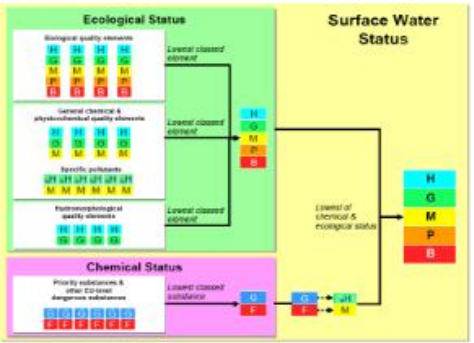


- Ecological Quality
- Characteristics
- Tackling Pollution
- Enhancing Biodiversity
- Managing Climate Change
- Working With Others
- Enter A New Project

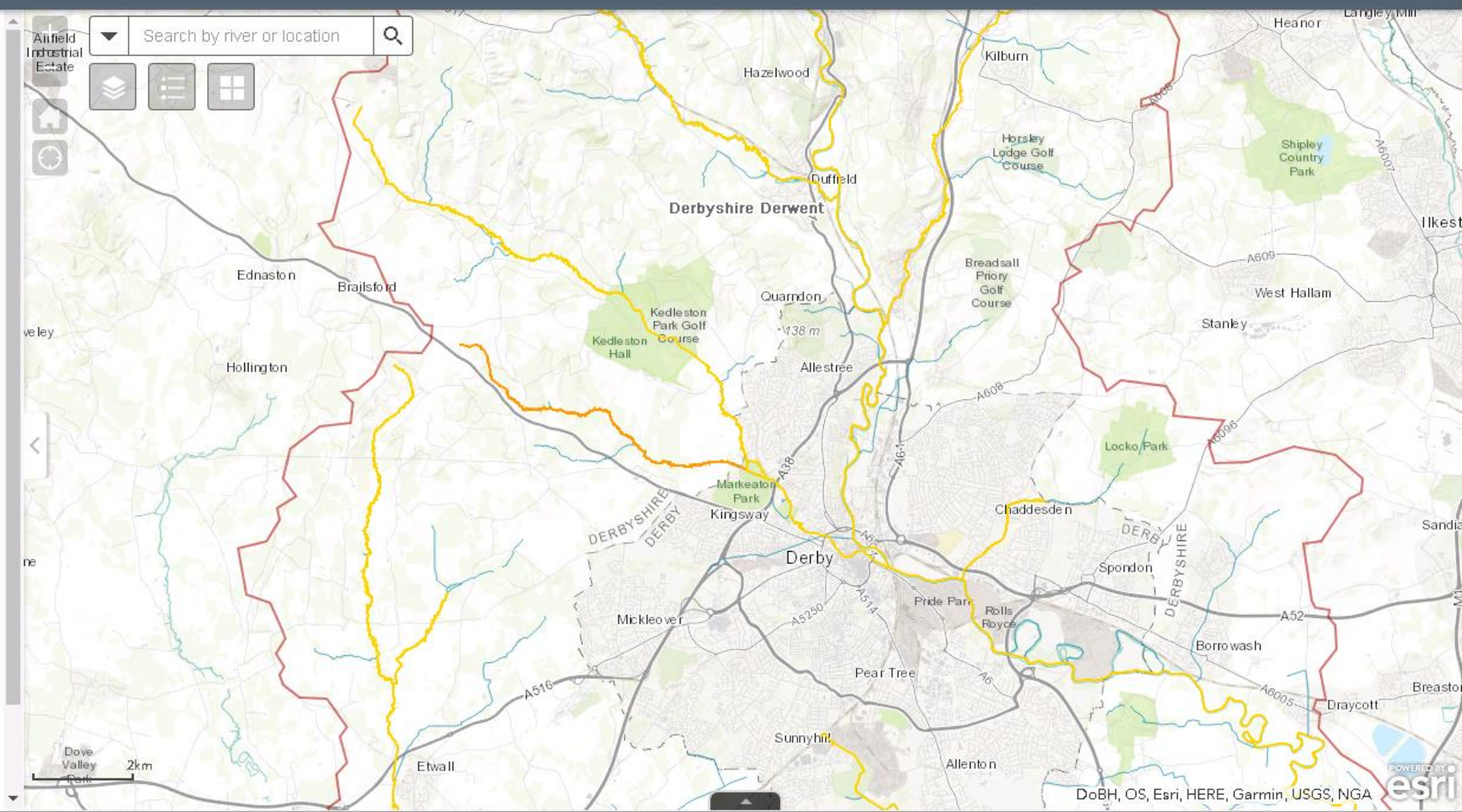
This map shows some key layers from the Environment Agency's Water Framework Directive assessment of the catchment's ecological quality. For more information see the [River Basin Management Plan](#).

Status	Code	"Reference condition"
High	1	Acceptable ecological condition
Good	2	
Moderate	3	Action needed for achieving acceptable ecological status
Poor	4	
Bad	5	

Click the *layers* icon to turn on and view the other map layers, and explore the breakdown of the various elements which make up the Ecological Status:



Clicking on a river in the map will link to the

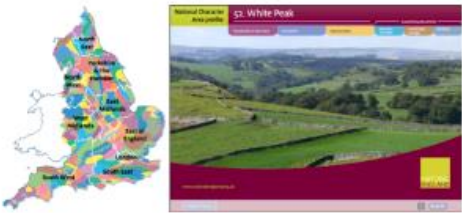


Derbyshire Derwent CaBA Partnership

A series of interactive maps presenting the data and evidence underpinning the partnership's catchment management plan. The last tab shows the actions which the catchment partnership are undertaking to tackle pollution, enhance biodiversity, manage climate change improve ecological quality.

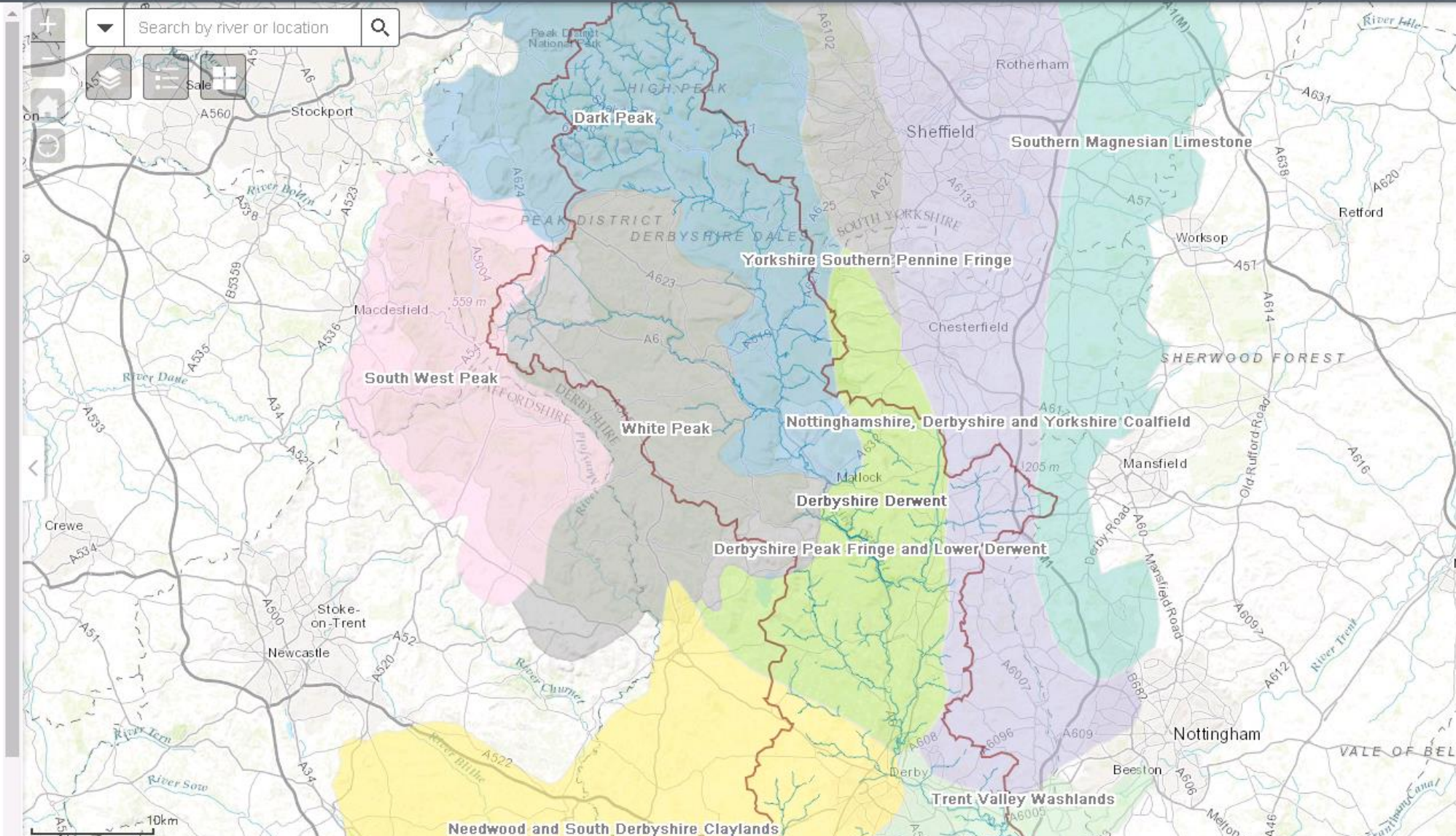
- Ecological Quality
- Characteristics
- Tackling Pollution
- Enhancing Biodiversity
- Managing Climate Change
- Working With Others
- Enter A New Project

This map shows the National Character Areas which are defined by Natural England, based on a combination of landscape, biodiversity, geodiversity and economic activity. Click on the map to open the National Character Area profile.



Click the layers icon to turn on other layers such as the terrain, geology and Index of Multiple Deprivation to understand more about the natural and socio-economic characteristics of the catchment.

The English Index of Multiple Deprivation (IMD) 2015



Derbyshire Derwent CaBA Partnership

A series of interactive maps presenting the data and evidence underpinning the partnership's catchment management plan. The last tab shows the actions which the catchment partnership are undertaking to tackle pollution, enhance biodiversity, manage climate change and improve ecological quality.

- Ecological Quality
- Characteristics
- Tackling Pollution
- Enhancing Biodiversity
- Managing Climate Change
- Working With Others
- Enter A New Project

This map shows some key layers relating to water pollution pressures and causes. Storm overflows are sites where water is released from combined sewers without treatment, in order to prevent overwhelming the sewer network during periods of heavy rainfall.

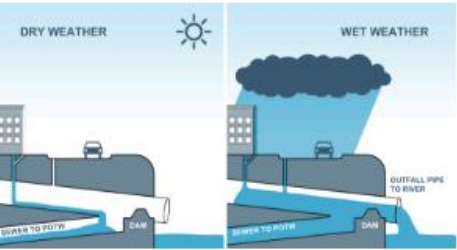
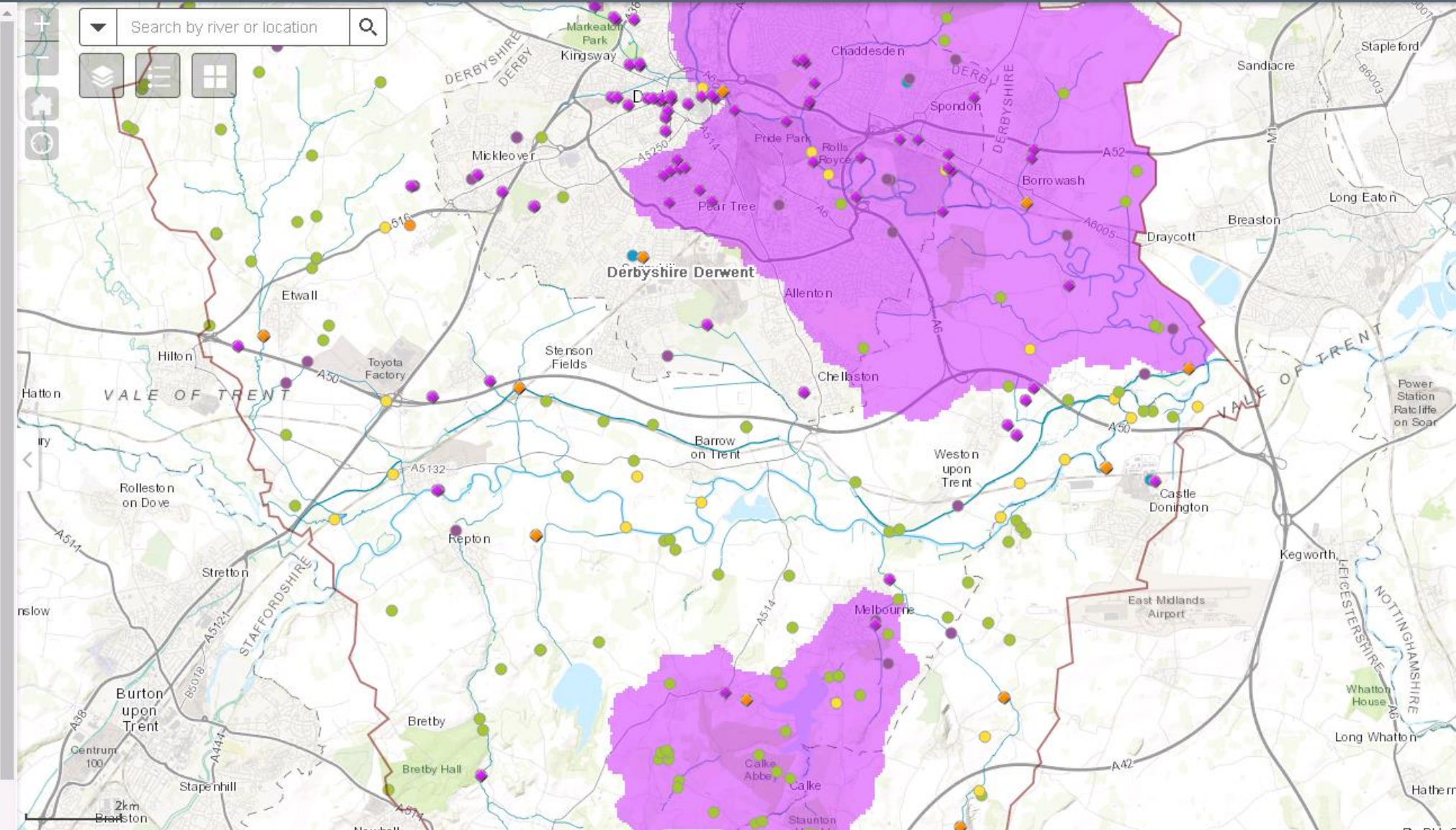


Image courtesy of Daniel Overbey, from blog post [here](#).

Click the *layers icon* to turn on the other layers, including Surface Water Safeguard Zones and zoom in to the map to see the full range of consented discharge types.

Safeguard Zones are areas where land management has an impact on the quality of water at drinking water abstraction sites (surface water or ground water). There are no ground water Safeguard Zones in the Derbyshire Derwent catchment, but there are a number for surface water. The Environment Agency has identified the key pressures for each of these zones, which can include the following:

- | | |
|--------------------|--------------------------------------|
| Pesticides | Pesticides & Ammonia |
| Colour | Pesticides & Benzo(a) Pyrene |
| Algae | Pesticides & Colour |
| Nitrate | Pesticides, Colour & Cryptosporidium |
| Colour & Algae | Pesticides & Nitrate |
| Pesticides & Algae | Pesticides & Turbidity |



Derbyshire Derwent CaBA Partnership

A Water

A series of interactive maps presenting the data and evidence underpinning the partnership's catchment management plan. The last tab shows the actions which the catchment partnership are undertaking to tackle pollution, enhance biodiversity, manage climate change and improve ecological quality.

- Ecological Quality
- Characteristics
- Tackling Pollution
- Enhancing Biodiversity
- Managing Climate Change
- Working With Others
- Enter A New Project

This map shows some key layers relating to biodiversity pressures and status. Click on the fish survey points to see detailed fisheries classification scheme data for 2015.

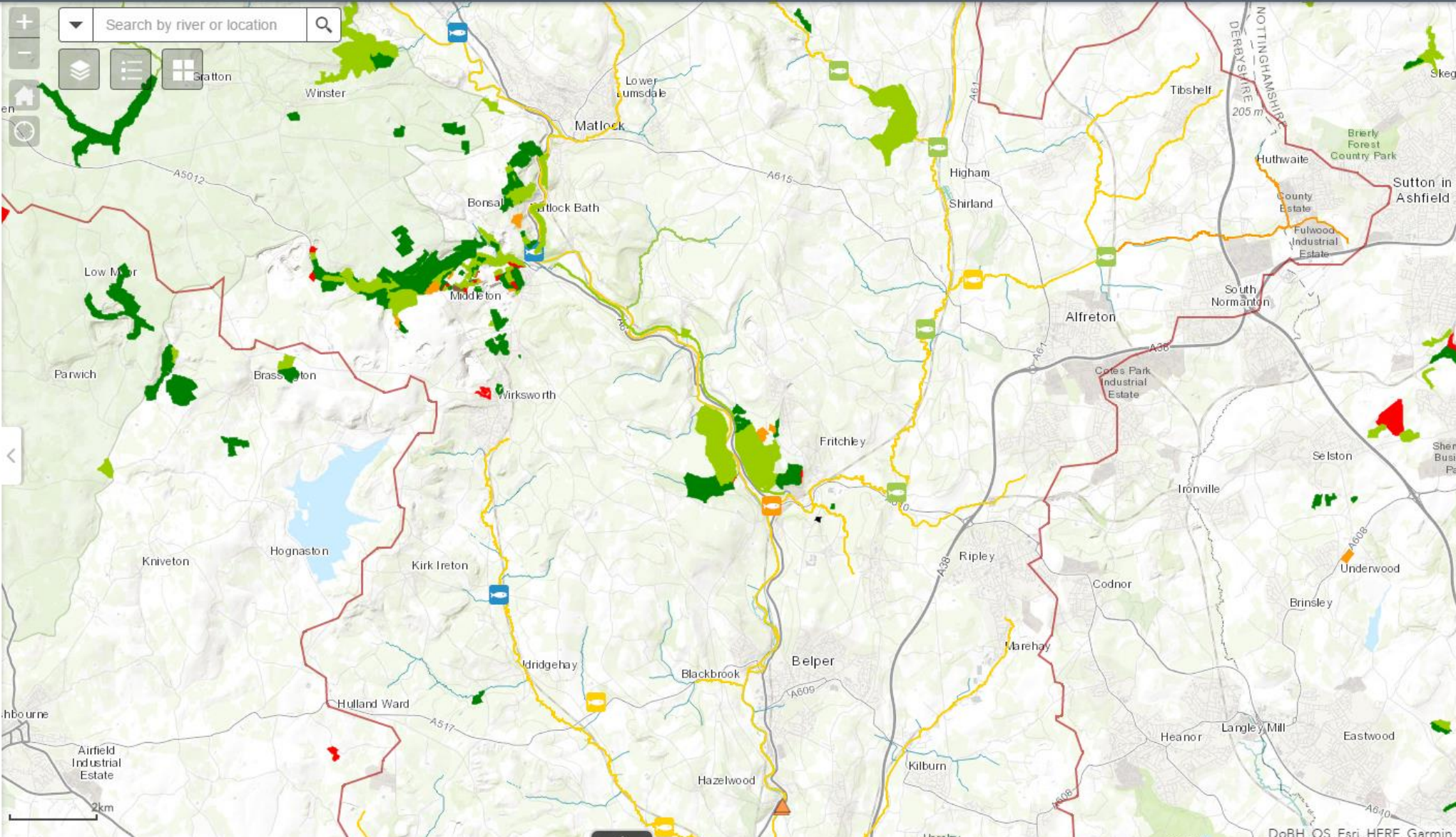


Click the *layers icon* to turn on other layers, such as the priority barriers to fish and eel migration and also designated sites for wildlife.

Once the SSSI layers are turned on, zoom in to investigate the condition of each SSSI. Natural England carry out condition assessments to identify whether SSSIs are improving or deteriorating over time and use the following descriptions to classify them:

- Favourable
- Unfavourable - Recovering
- Unfavourable - No Change
- Unfavourable - Declining

You can find more information, including summary statistics, on their website [here](#).



Derbyshire Derwent CaBA Partnership

A series of interactive maps presenting the data and evidence underpinning the partnership's catchment management plan. The last tab shows the actions which the catchment partnership are undertaking to tackle pollution, enhance biodiversity, manage climate change and improve ecological quality.

- Ecological Quality
- Characteristics
- Tackling Pollution
- Enhancing Biodiversity
- Managing Climate Change
- Working With Others
- Enter A New Project




This map shows some key layers relating to flood risk published directly by the Environment Agency as part of their [flood warning information service](#).

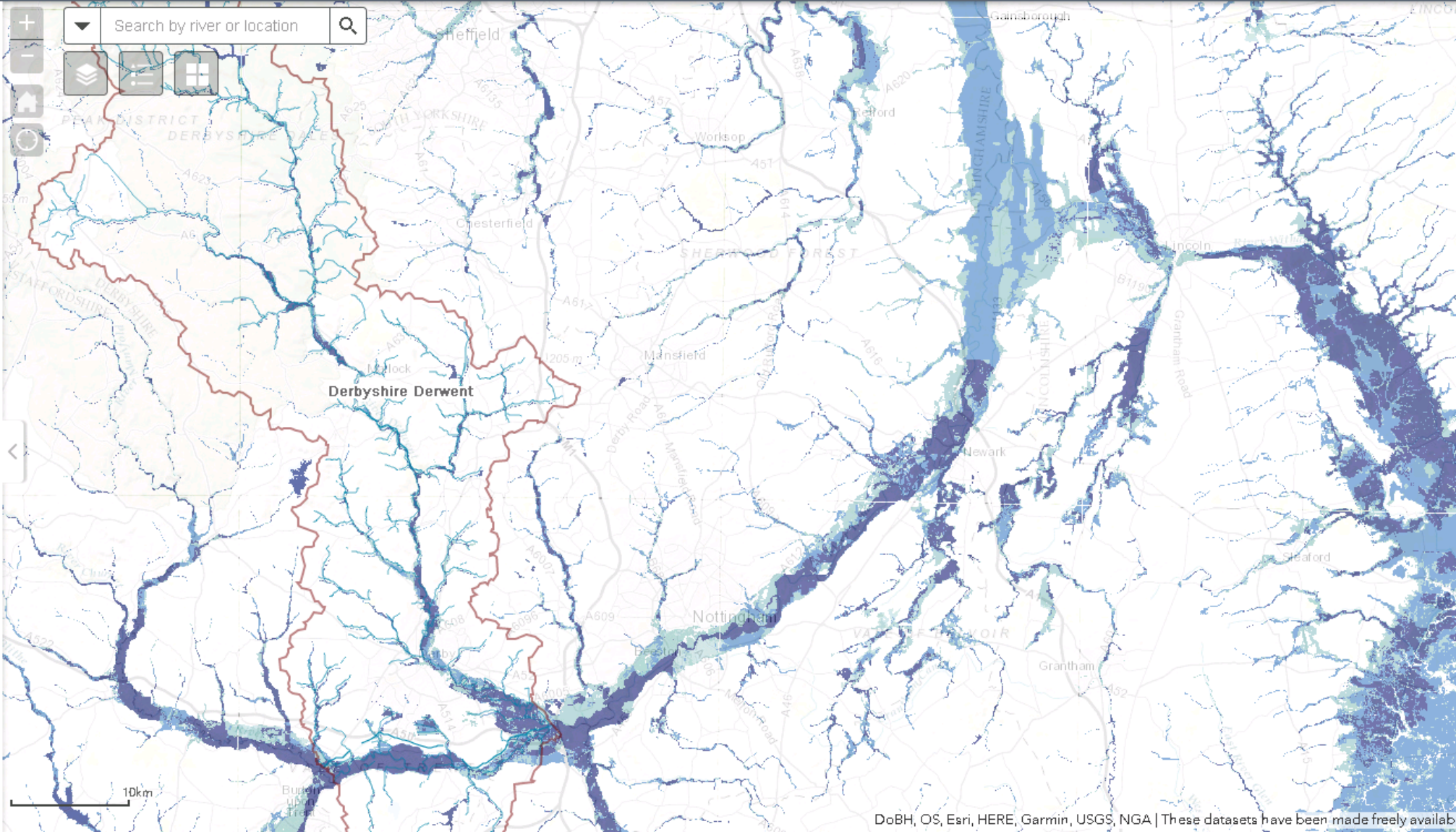
Risk of flooding from rivers and the sea:

- High
- Medium
- Low
- Very low

Risk of flooding from surface water:

- High
- Medium
- Low
- Very low

 The Risk of Flooding from Rivers and the Sea layer is turned on by default - click on the *layers icon* to turn on surface water flood risk and historic flood extents.



Derbyshire Derwent CaBA Partnership

A series of interactive maps presenting the data and evidence underpinning the partnership's catchment management plan. The last tab shows the actions which the catchment partnership are undertaking to tackle pollution, enhance biodiversity, manage climate change and improve ecological quality.



- Ecological Quality
- Characteristics
- Tackling Pollution
- Enhancing Biodiversity
- Managing Climate Change
- Working With Others
- Enter A New Project

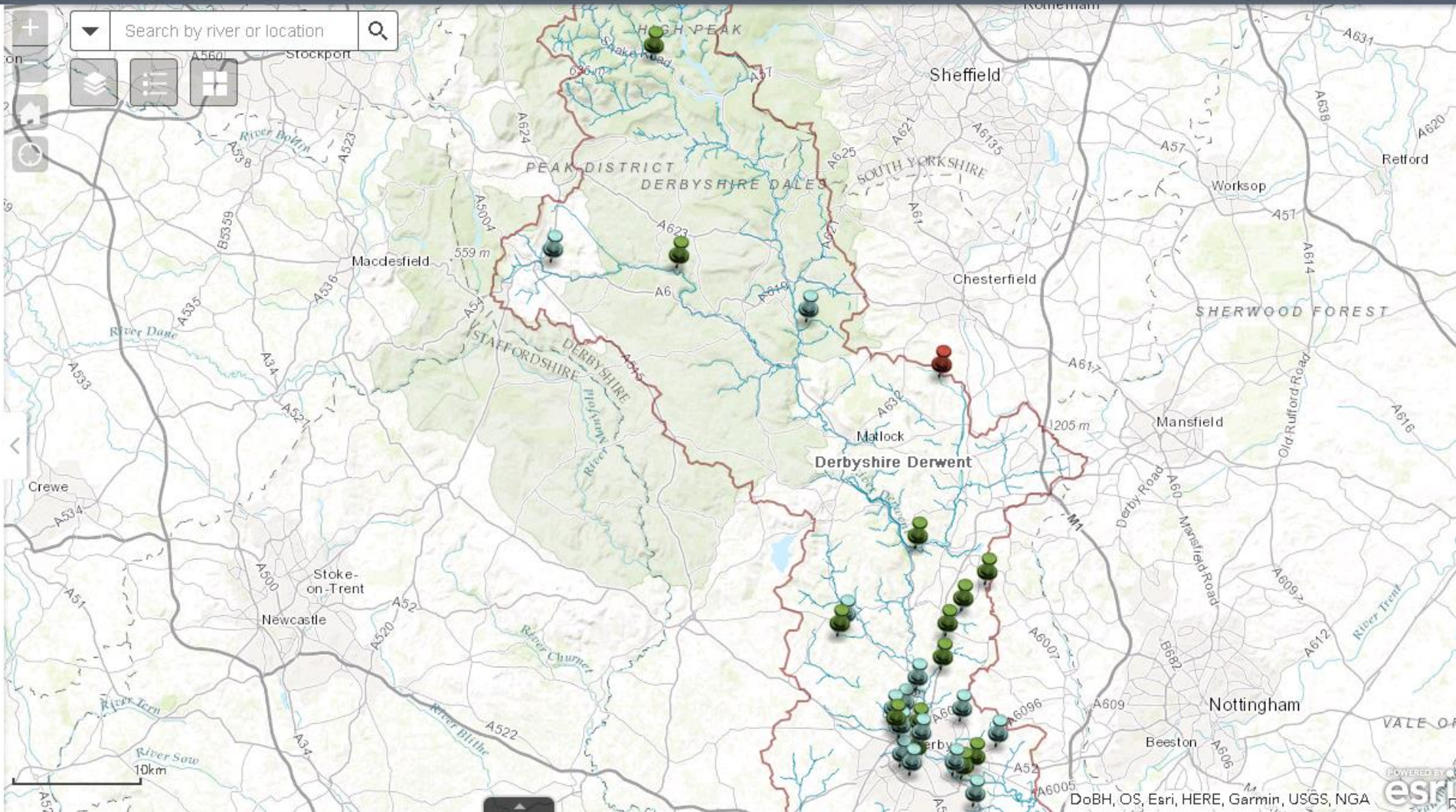


This map shows the key organisations which we are working with to develop a shared catchment management plan, and some of the projects which we are developing in partnership to tackle the combined issues in the catchment.

Catchment Partnership Projects

-  In Development
-  Conceptual/Idea
-  Full (Ready to be delivered)

Click on the map to view project and partner information.



A series of interactive maps presenting the data and evidence underpinning the partnership's catchment management plan. The last tab shows the actions which the catchment partnership are undertaking to tackle pollution, enhance biodiversity, manage climate change and improve ecological quality.



Ecological Quality

Characteristics

Tackling Pollution

Enhancing Biodiversity

Managing Climate Change

Working With Others

Enter A New Project



Environment
Agency

Project Ideas

Form for inputting Project Ideas into the data store. Please fill in as much information as you are able to. The data is open for people to view, please do not name individuals in the form, instead naming their organisation.

1. Enter Information

Your Name

Your Role/Organisation

Catchment Partnership (required)

Select... 

Project Name

Project Description

Where now...?

- Developing a pipeline of projects where some are being delivered, while others are ready for funding bids and yet others are being developed.
- Developing better local engagement through project and other work.
- Developing strategies to ensure the long term sustainability of the catchment partnership.



CATCHMENT PARTNERSHIP