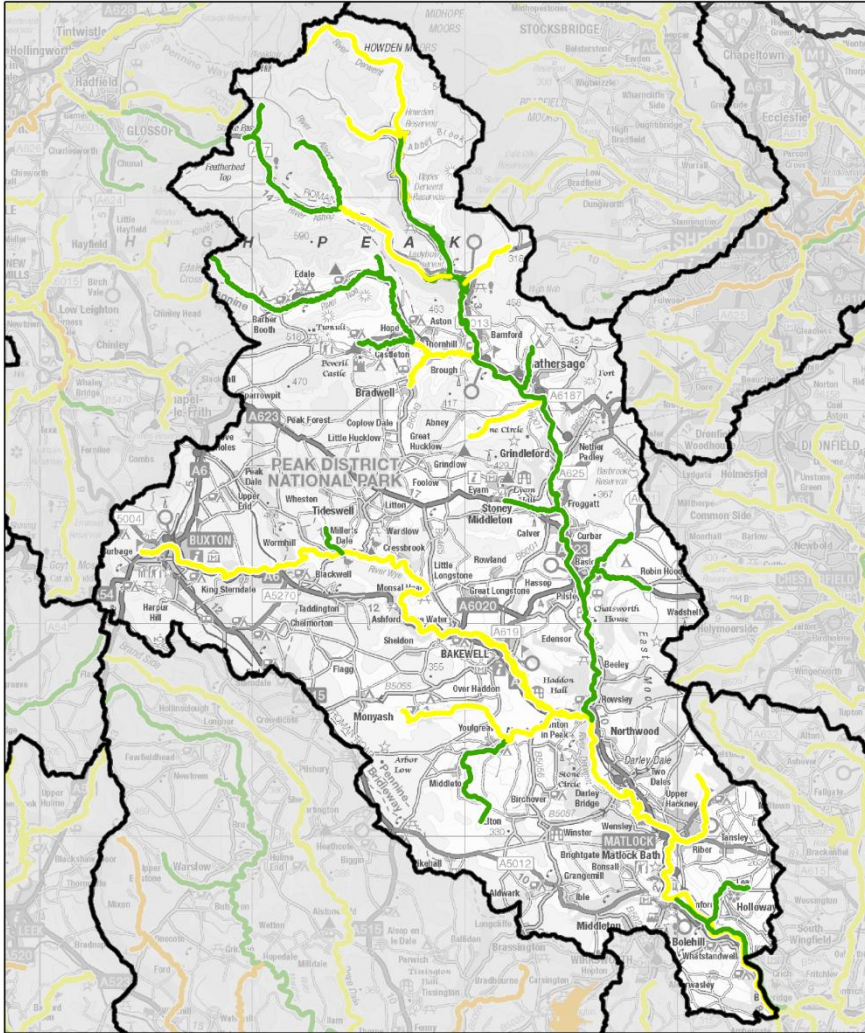
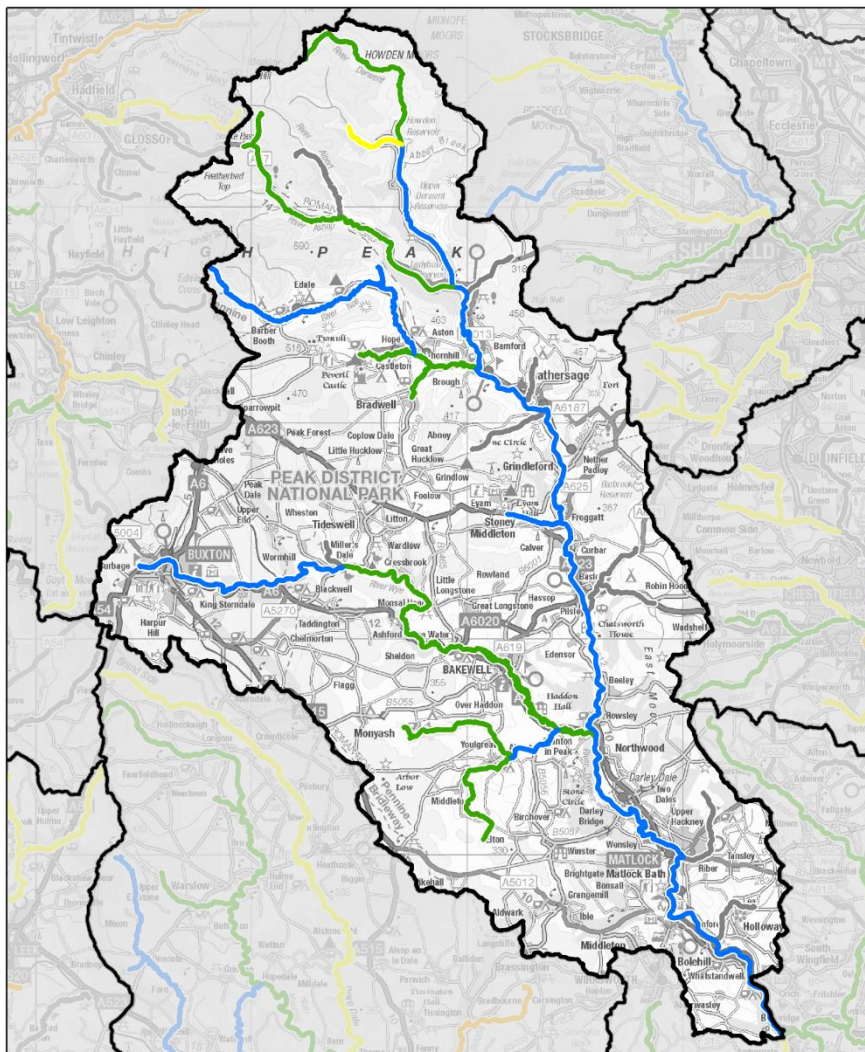









**WFD Operational Catchment:  
Derwent Derbyshire  
Cycle 2 Overall Ecological Status (2015 data release)**



**WFD Operational Catchment: Derwent Derbyshire**  
**Cycle 2 Fish Status 2015**  
 (based on monitoring data to Dec 2014)

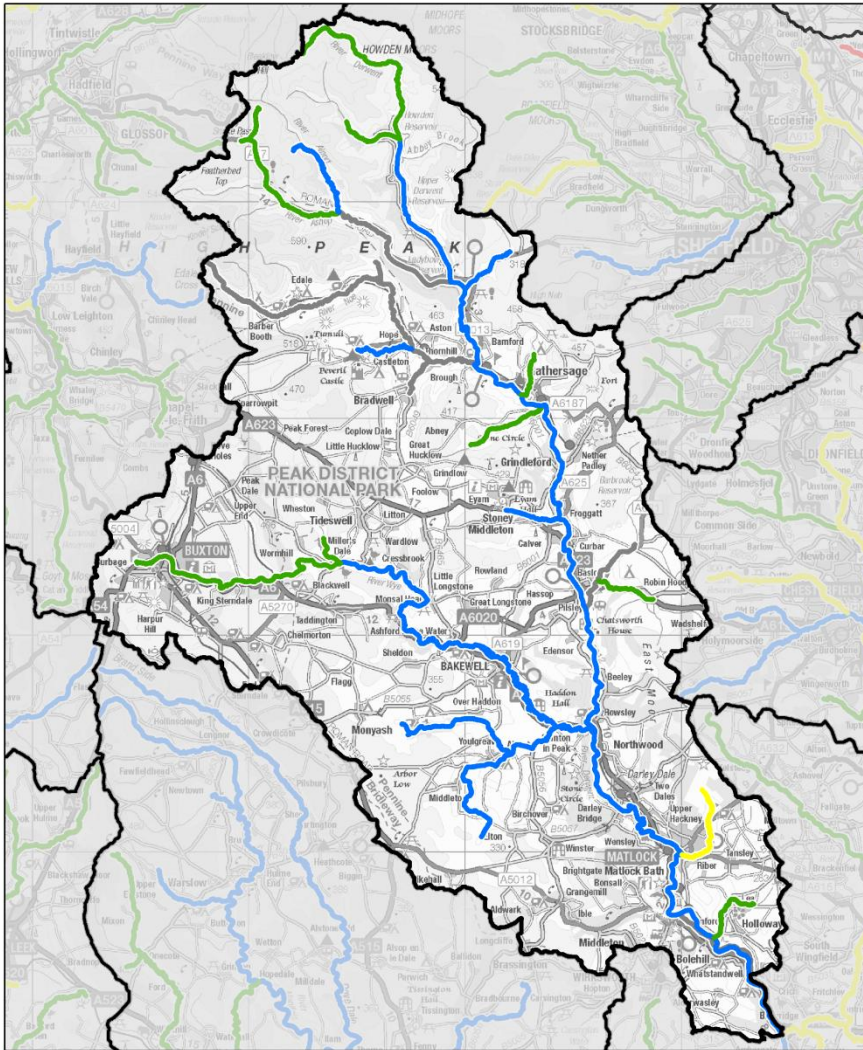


	High		Poor		Operational Catchment	0	3	6	9	km
	Good		Bad							
	Moderate		Not Assessed							

© Crown copyright and database rights 2014  
 Ordnance Survey 100024198  
 © Environment Agency copyright and/or  
 database rights 2014. All rights reserved.

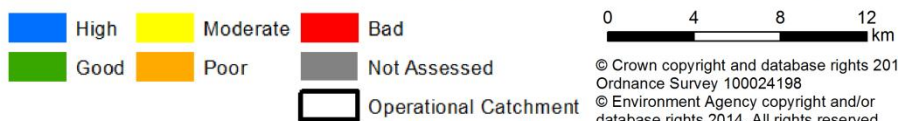
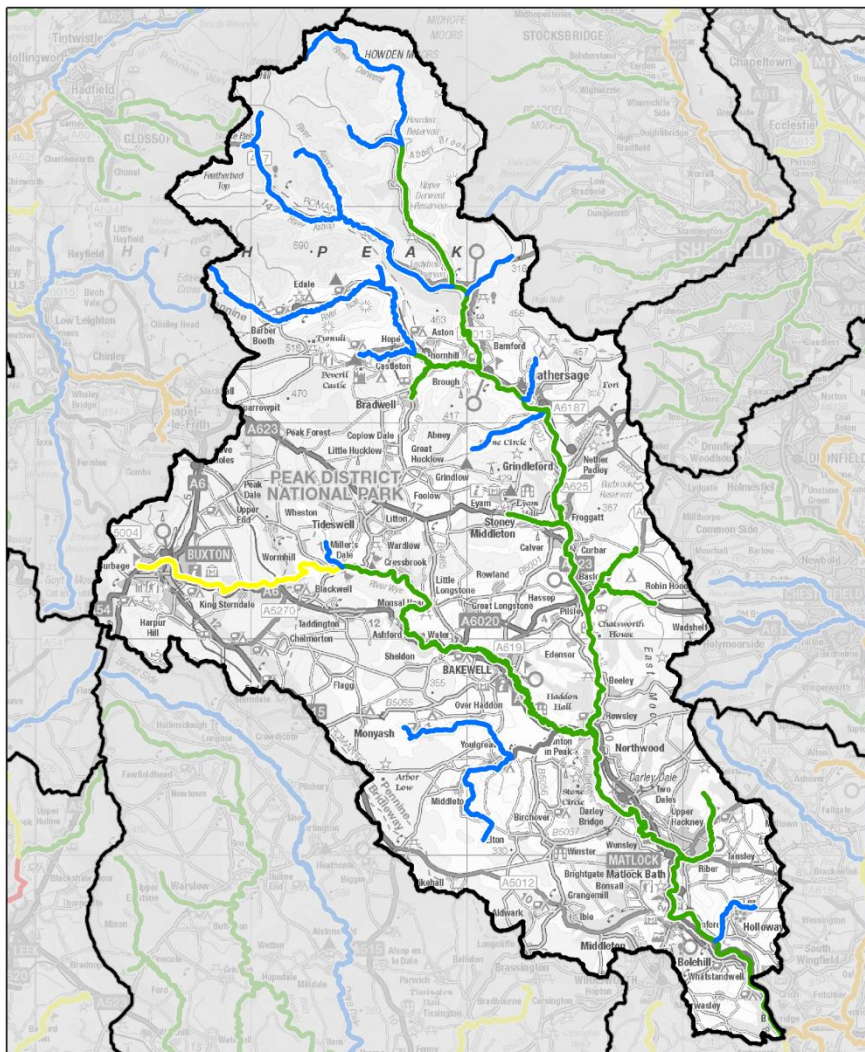


**WFD Operational Catchment: Derwent Derbyshire  
Cycle 2 Invertebrates Status 2015  
(based on monitoring data to Dec 2014)**



High	Moderate	Bad	 © Crown copyright and database rights 2014 Ordnance Survey 100024198 © Environment Agency copyright and/or database rights 2014. All rights reserved.
Good	Poor	Not Assessed	
Operational Catchment			

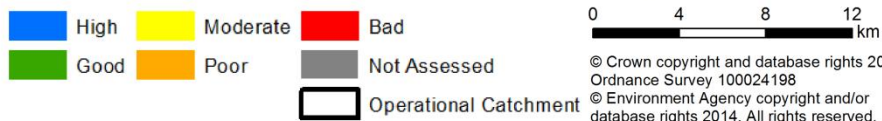
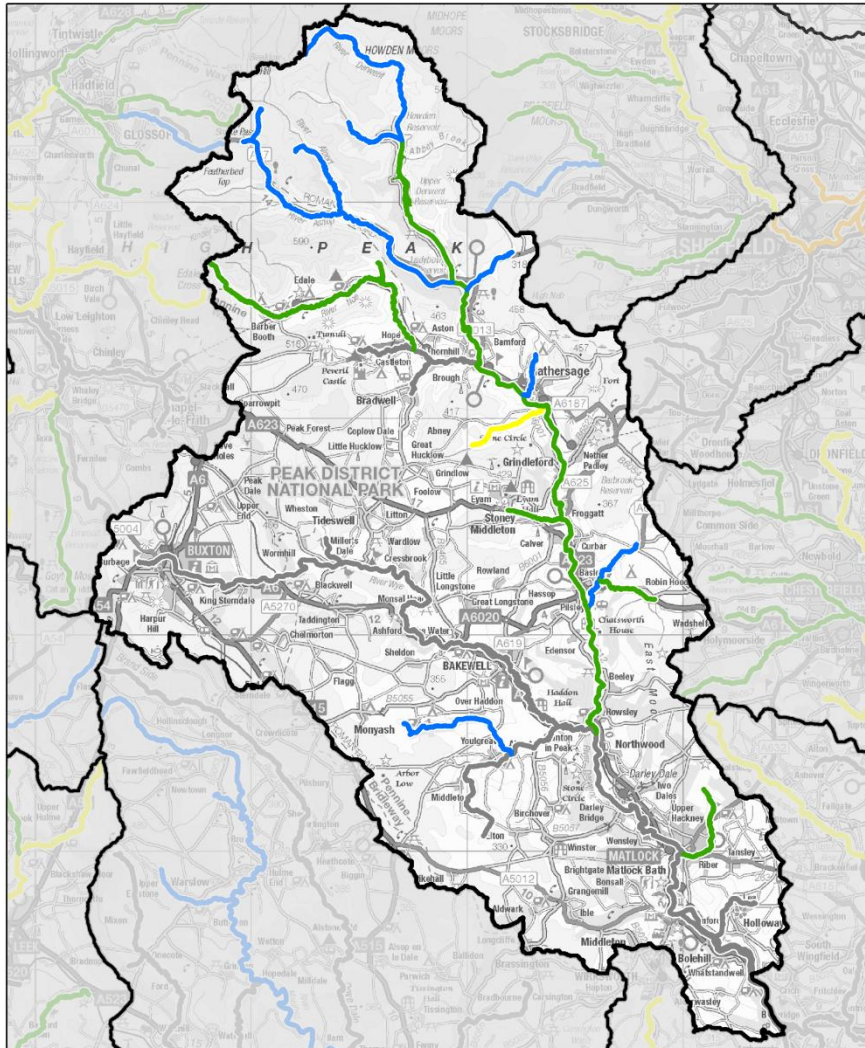
**WFD Operational Catchment: Derwent Derbyshire**  
**Cycle 2 Phosphate Status 2015**  
 (based on monitoring data to Dec 2014)



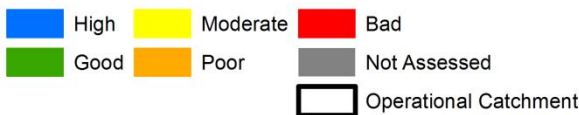
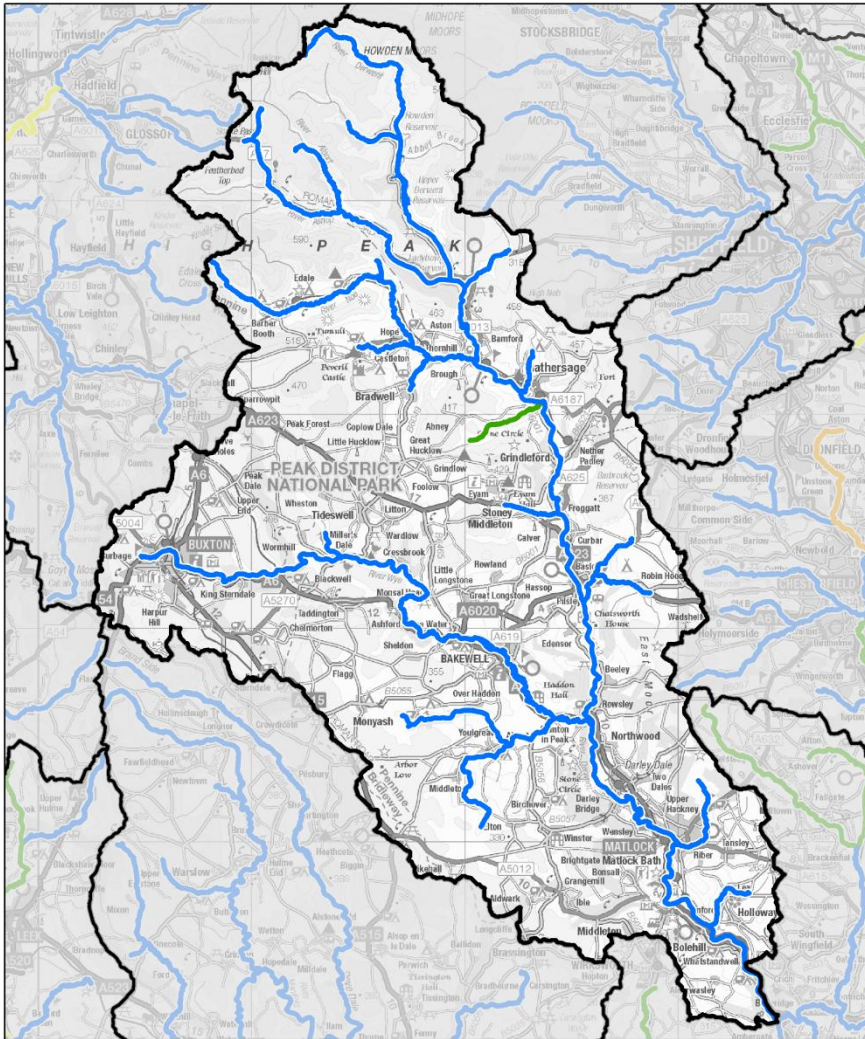
© Crown copyright and database rights 2014  
 Ordnance Survey 100024198  
 © Environment Agency copyright and/or  
 database rights 2014. All rights reserved.



**WFD Operational Catchment: Derwent Derbyshire  
Cycle 2 Phytobenthos Status 2015  
(based on monitoring data to Dec 2014)**



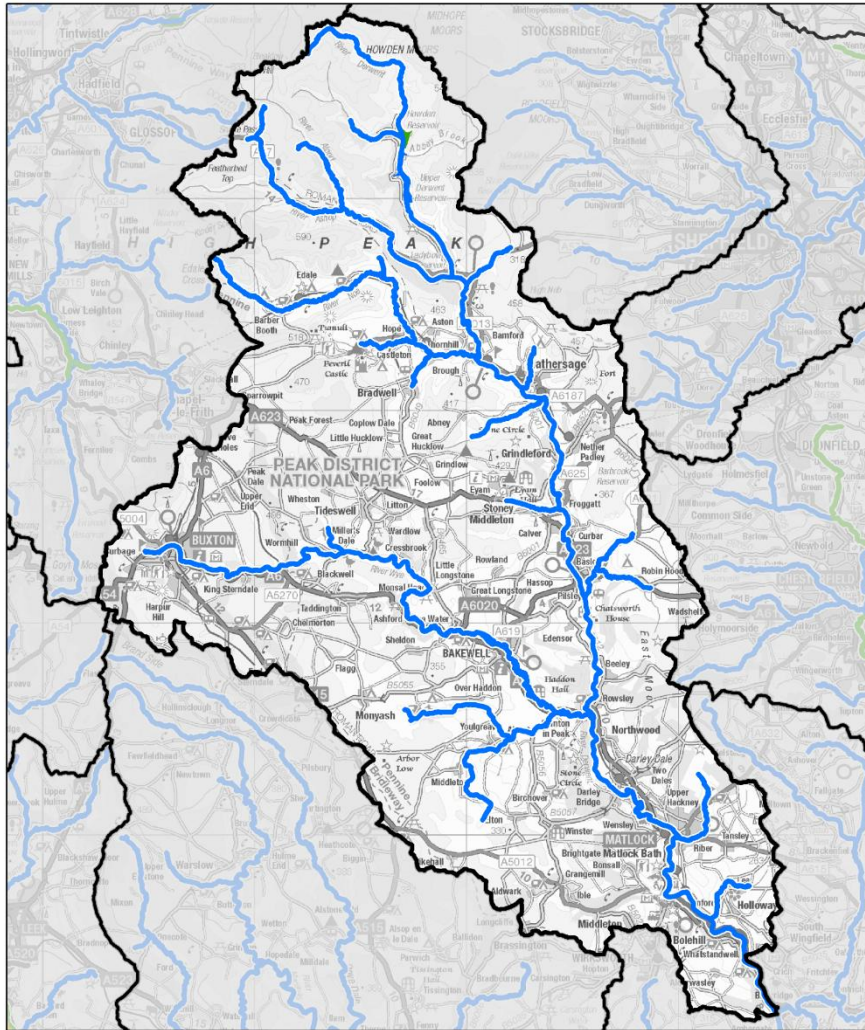
**WFD Operational Catchment: Derwent Derbyshire  
Cycle 2 Ammonia Status 2015  
(based on monitoring data to Dec 2014)**



© Crown copyright and database rights 2014  
Ordnance Survey 100024198  
© Environment Agency copyright and/or  
database rights 2014. All rights reserved.



**WFD Operational Catchment: Derwent Derbyshire**  
**Cycle 2 Dissolved Oxygen Status 2015**  
 (based on monitoring data to Dec 2014)



© Crown copyright and database rights 2014  
 Ordnance Survey 100024198  
 © Environment Agency copyright and/or  
 database rights 2014. All rights reserved.