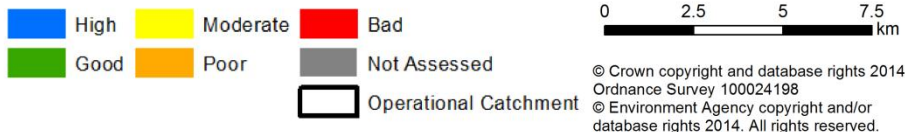
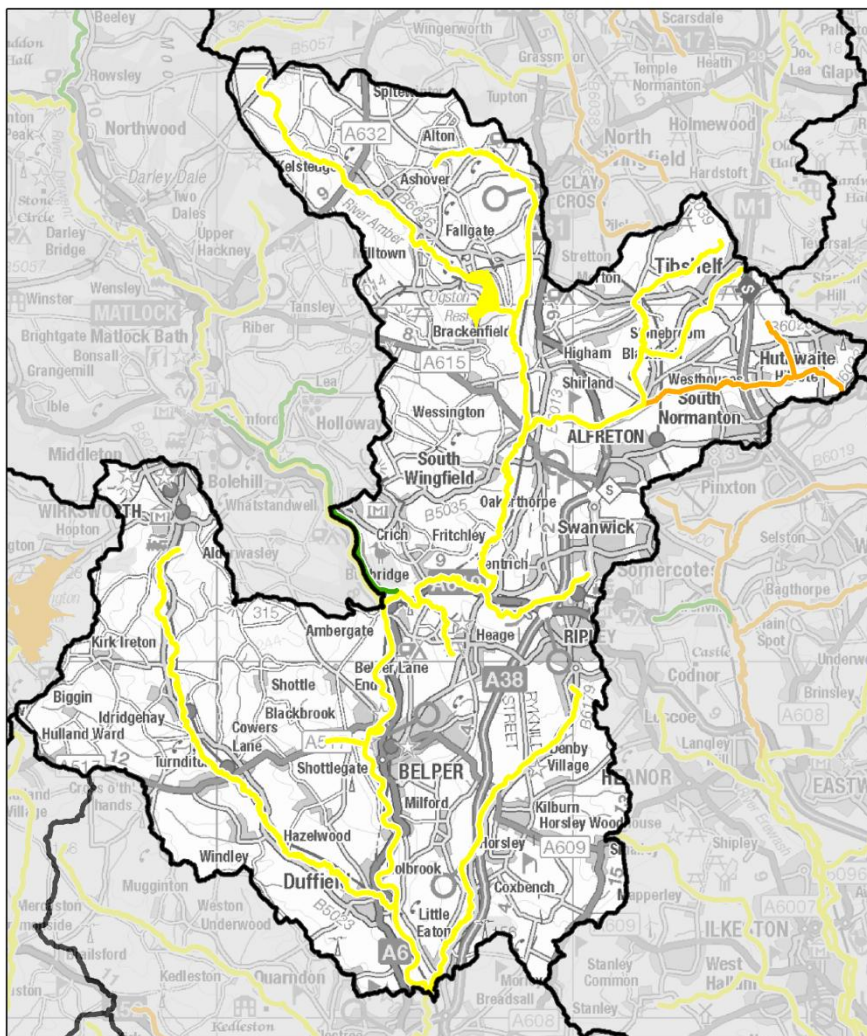
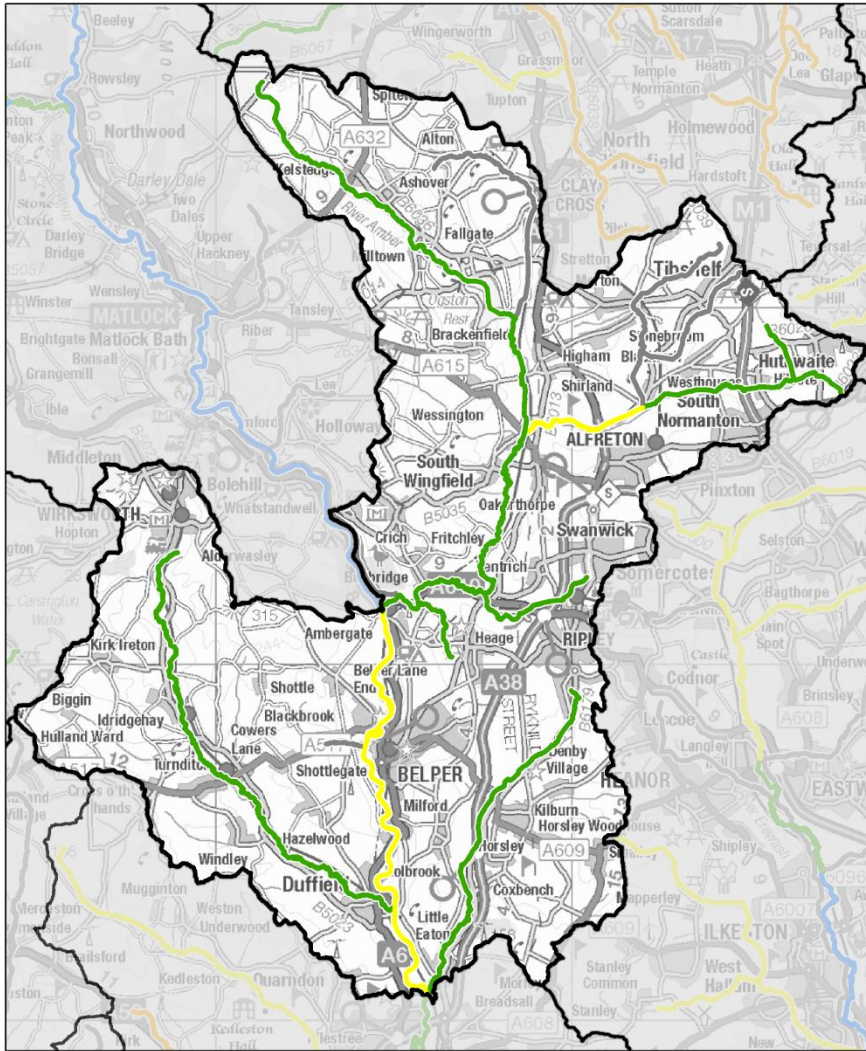


**WFD Operational Catchment:  
Derwent Mid  
Cycle 2 Overall Ecological Status (2015 data release)**

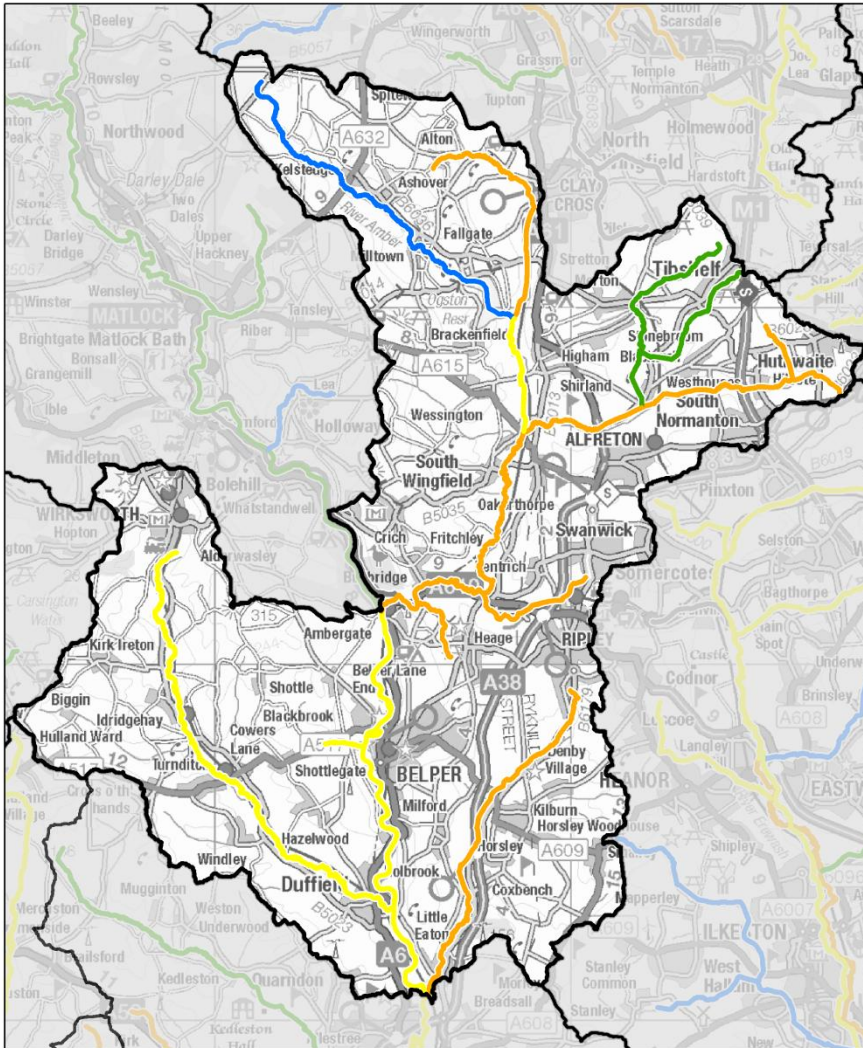


**WFD Operational Catchment: Derwent Mid  
Cycle 2 Fish Status 2015  
(based on monitoring data to Dec 2014)**



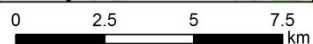
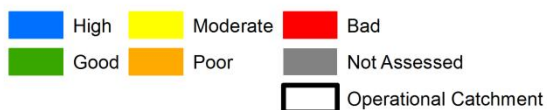
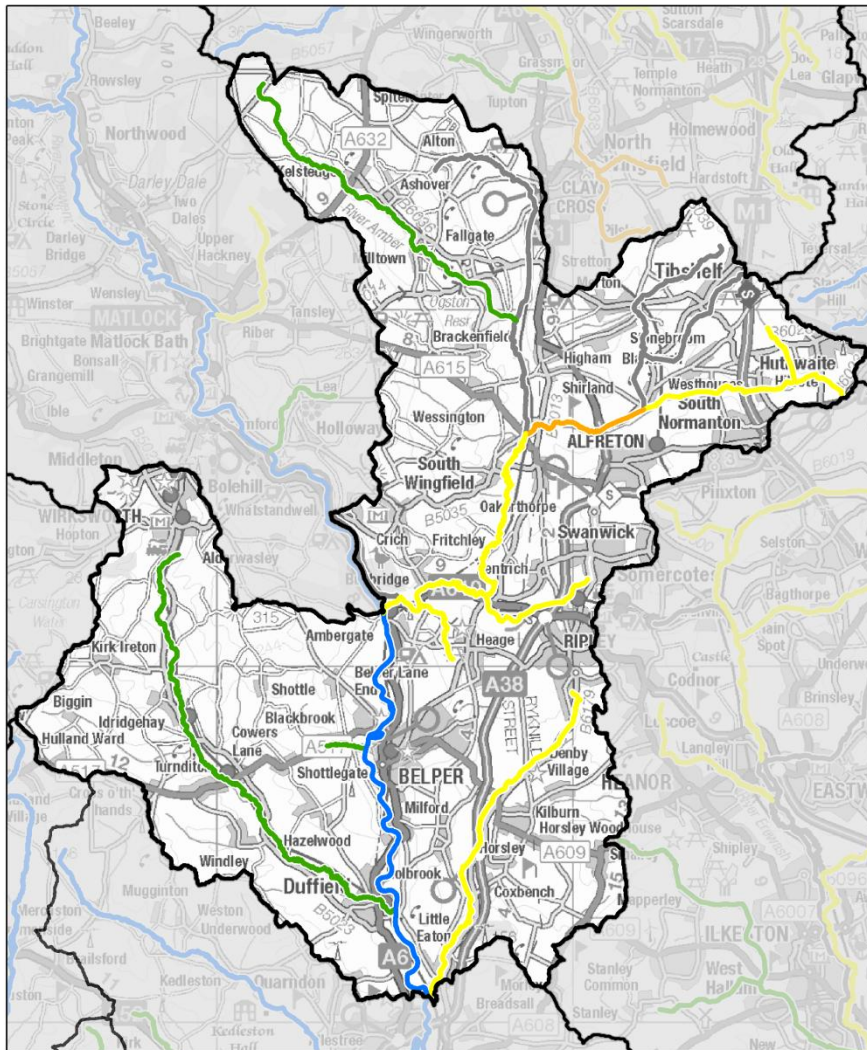
0 1.5 3 4.5 km  
© Crown copyright and database rights 2014  
Ordnance Survey 100024198  
© Environment Agency copyright and/or  
database rights 2014. All rights reserved.

**WFD Operational Catchment: Derwent Mid**  
**Cycle 2 Phosphate Status 2015**  
**(based on monitoring data to Dec 2014)**



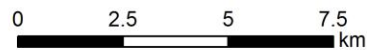
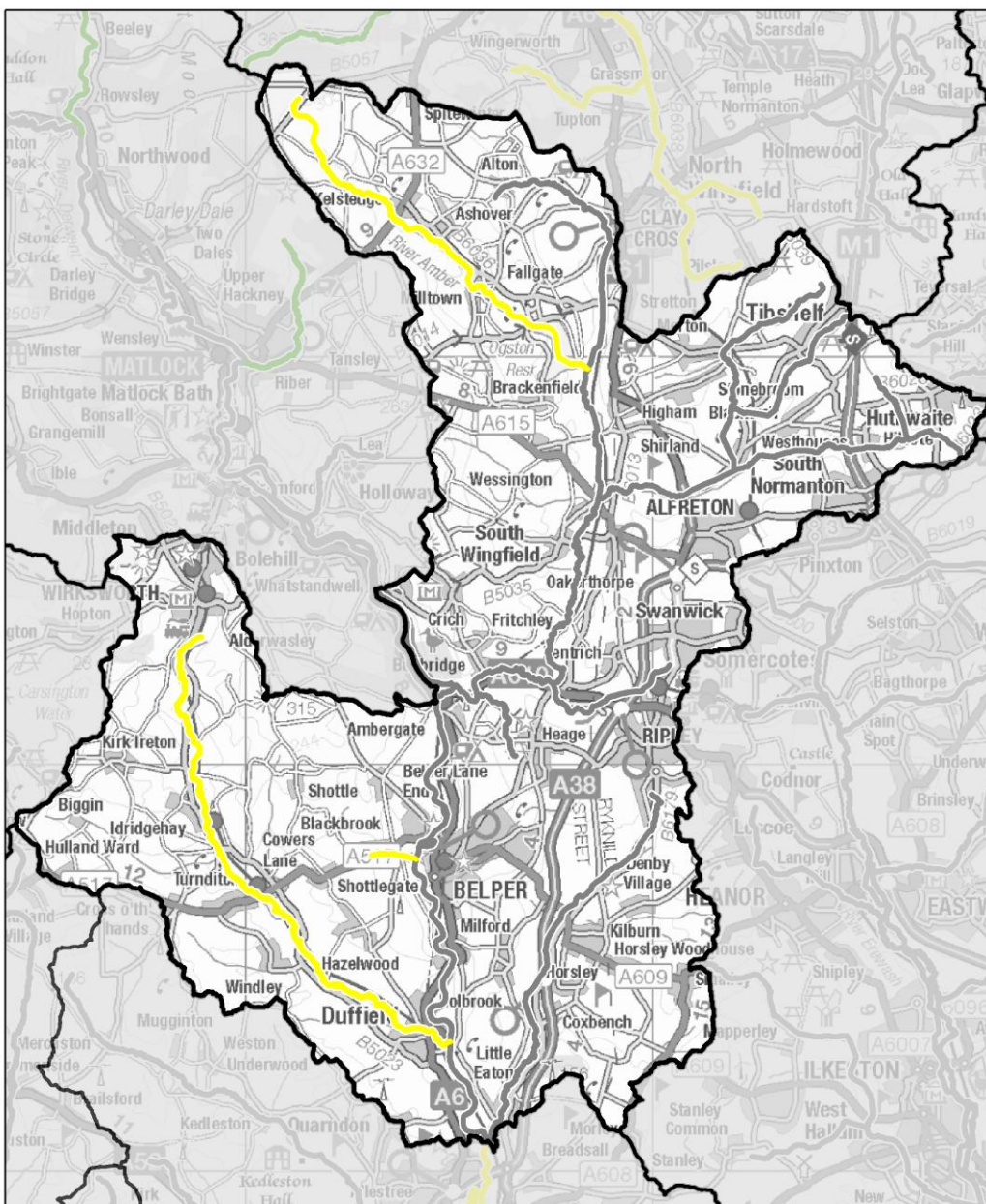
High	Moderate	Bad	0	2.5	5	7.5
Good	Poor	Not Assessed				
Operational Catchment		© Crown copyright and database rights 2014 Ordnance Survey 100024198 © Environment Agency copyright and/or database rights 2014. All rights reserved.				

**WFD Operational Catchment: Derwent Mid**  
**Cycle 2 Invertebrates Status 2015**  
 (based on monitoring data to Dec 2014)



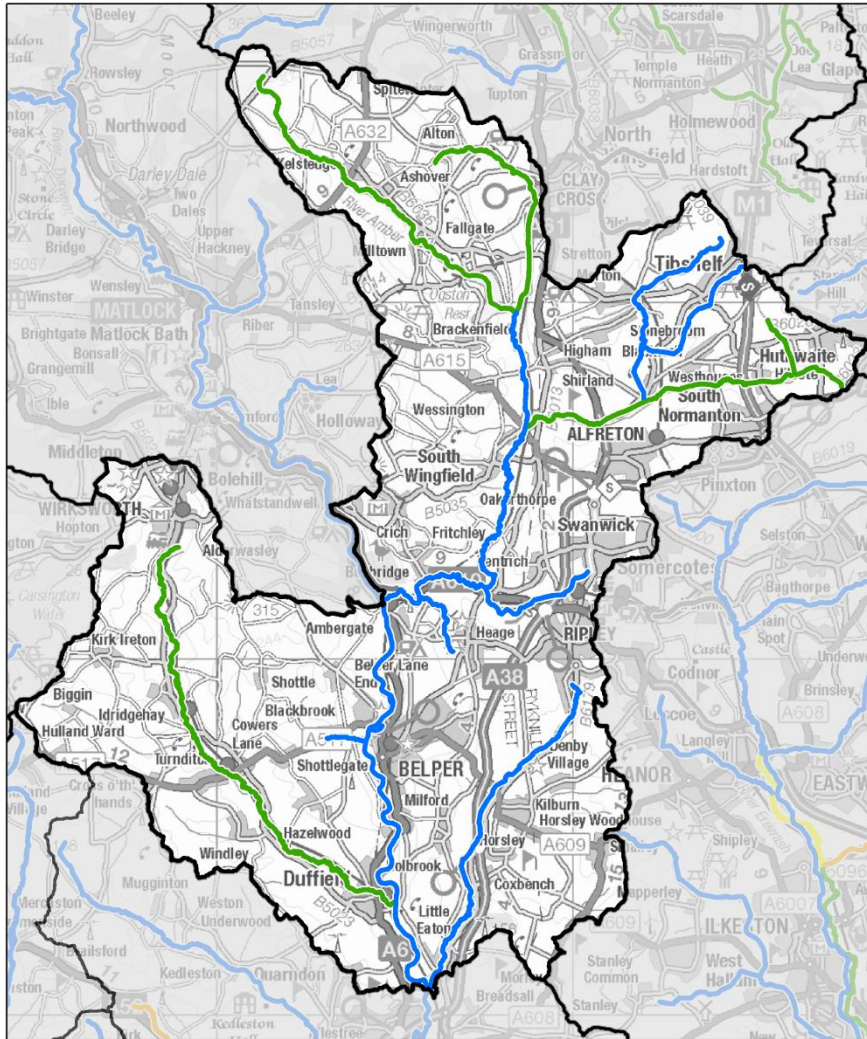
© Crown copyright and database rights 2014  
 Ordnance Survey 100024198  
 © Environment Agency copyright and/or  
 database rights 2014. All rights reserved.

### WFD Operational Catchment: Derwent Mid Cycle 2 Phytobenthos Status 2015 (based on monitoring data to Dec 2014)

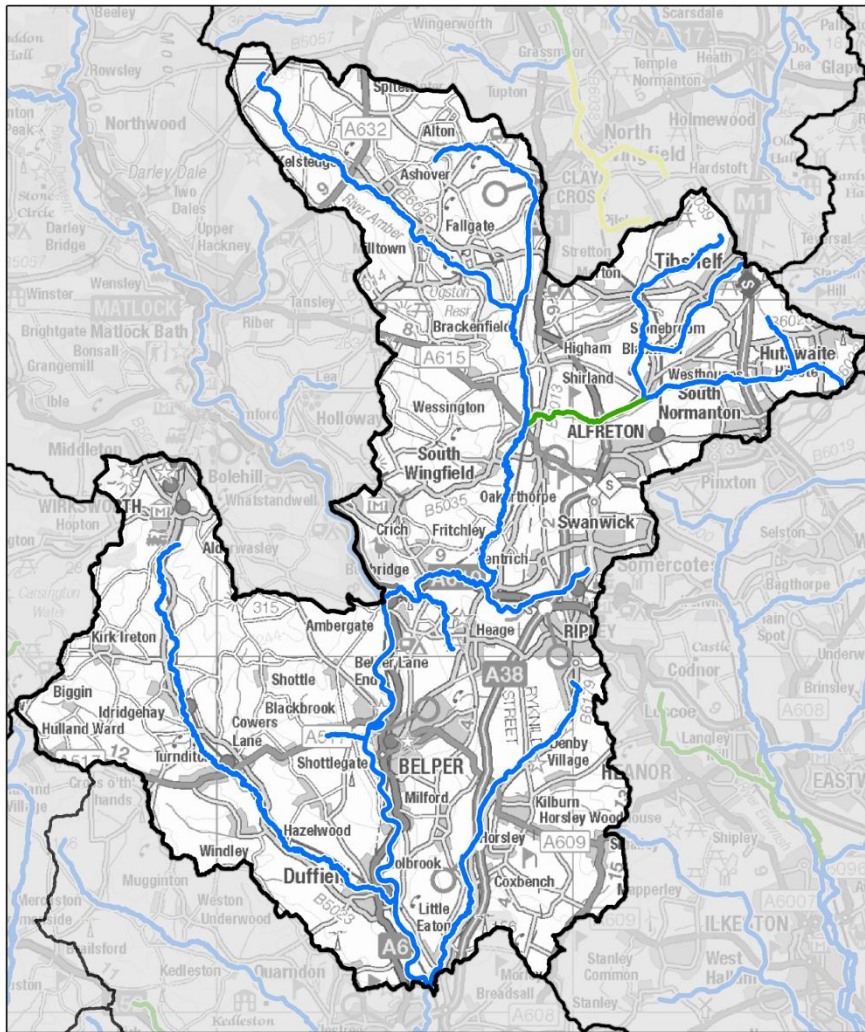


© Crown copyright and database rights 2014  
Ordnance Survey 100024198  
© Environment Agency copyright and/or  
database rights 2014. All rights reserved.

**WFD Operational Catchment: Derwent Mid**  
**Cycle 2 Ammonia Status 2015**  
**(based on monitoring data to Dec 2014)**



**WFD Operational Catchment: Derwent Mid**  
**Cycle 2 Dissolved Oxygen Status 2015**  
**(based on monitoring data to Dec 2014)**



High	Poor	Operational Catchment	0 1.5 3 4.5 km
Good	Bad		
Moderate	Not Assessed		

© Crown copyright and database rights 2014  
Ordnance Survey 100024198  
© Environment Agency copyright and/or  
database rights 2014. All rights reserved.