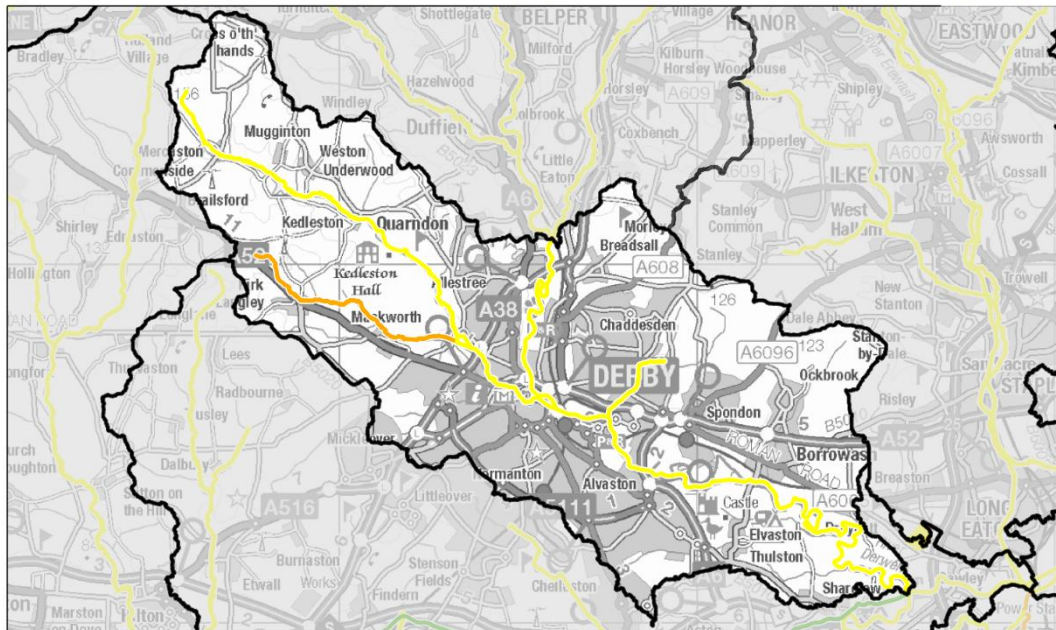
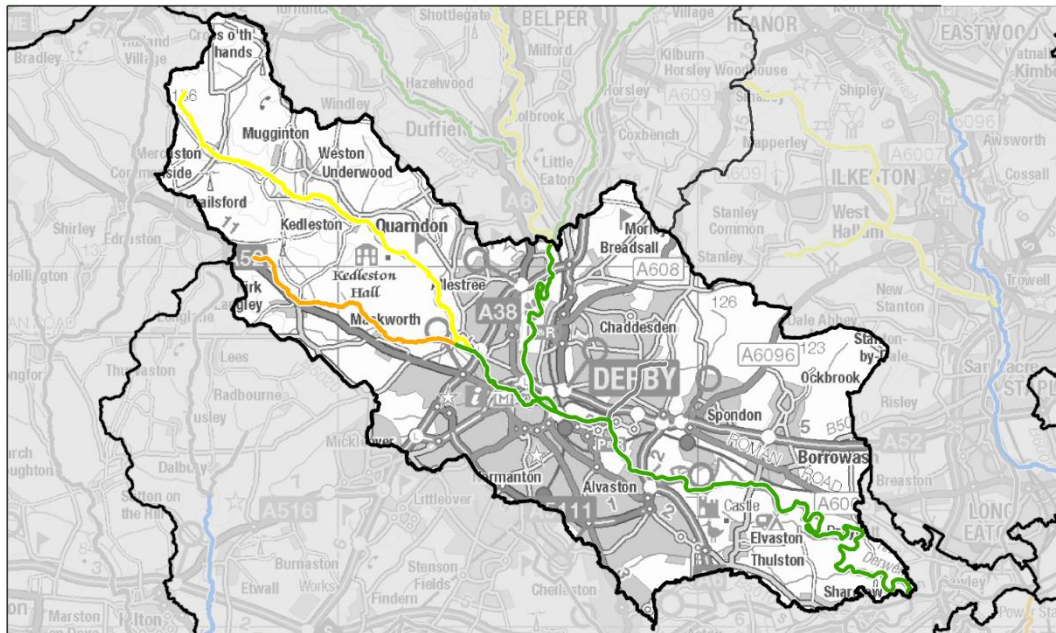


**WFD Operational Catchment: Derwent Lower - Derbyshire**  
**Cycle 2 Overall Ecological Status (2015 data release)**



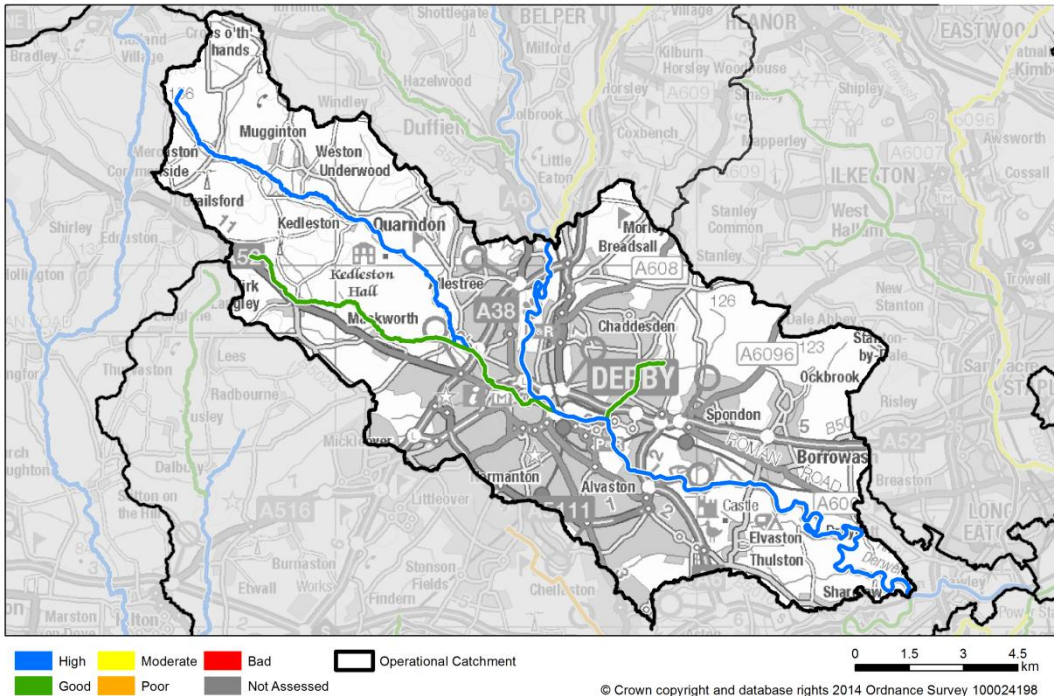
© Crown copyright and database rights 2014 Ordnance Survey 100024198  
 © Environment Agency copyright and/or database rights 2014. All rights reserved.

**WFD Operational Catchment: Derwent Lower - Derbyshire**  
**Cycle 2 Fish Status 2015 (based on monitoring data to Dec 2014)**

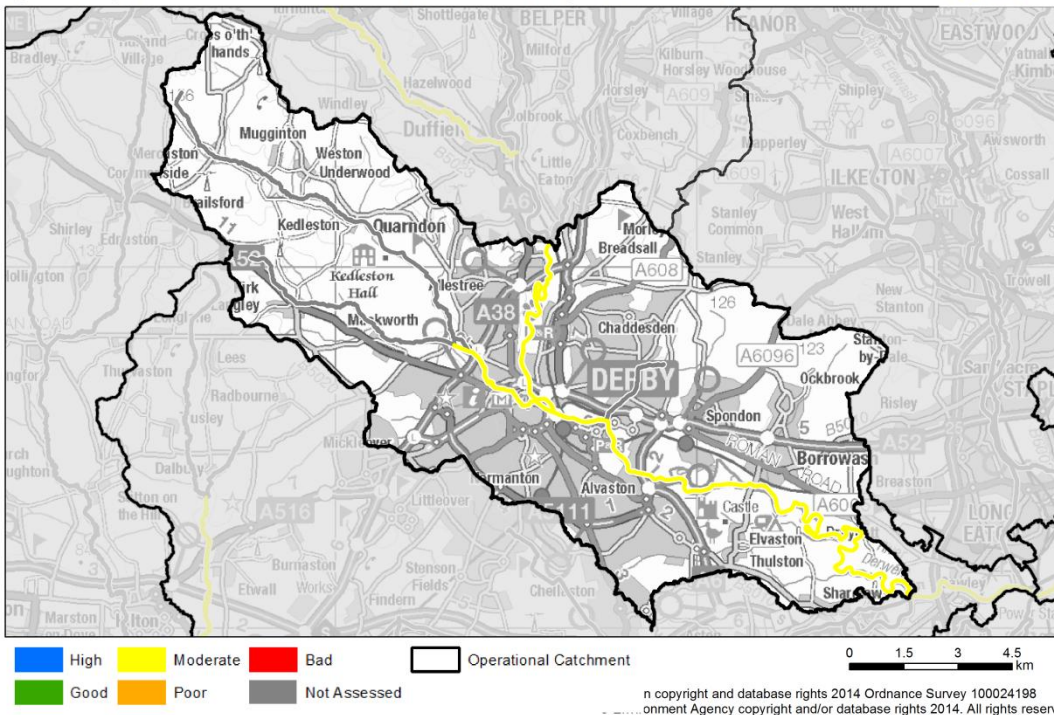


© Crown copyright and database rights 2014 Ordnance Survey 100024198  
 © Environment Agency copyright and/or database rights 2014. All rights reserved.

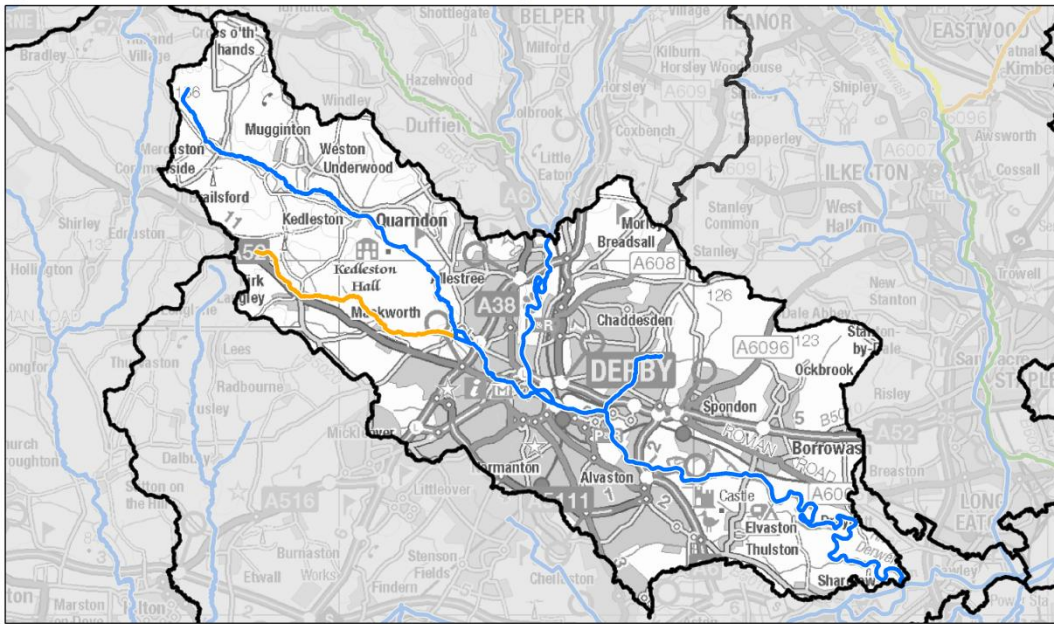
**WFD Operational Catchment: Derwent Lower - Derbyshire**  
**Cycle 2 Invertebrates Status 2015 (based on monitoring data to Dec 2014)**



**WFD Operational Catchment: Derwent Lower - Derbyshire**  
**Cycle 2 Phytobenthos Status 2015 (based on monitoring data to Dec 2014)**

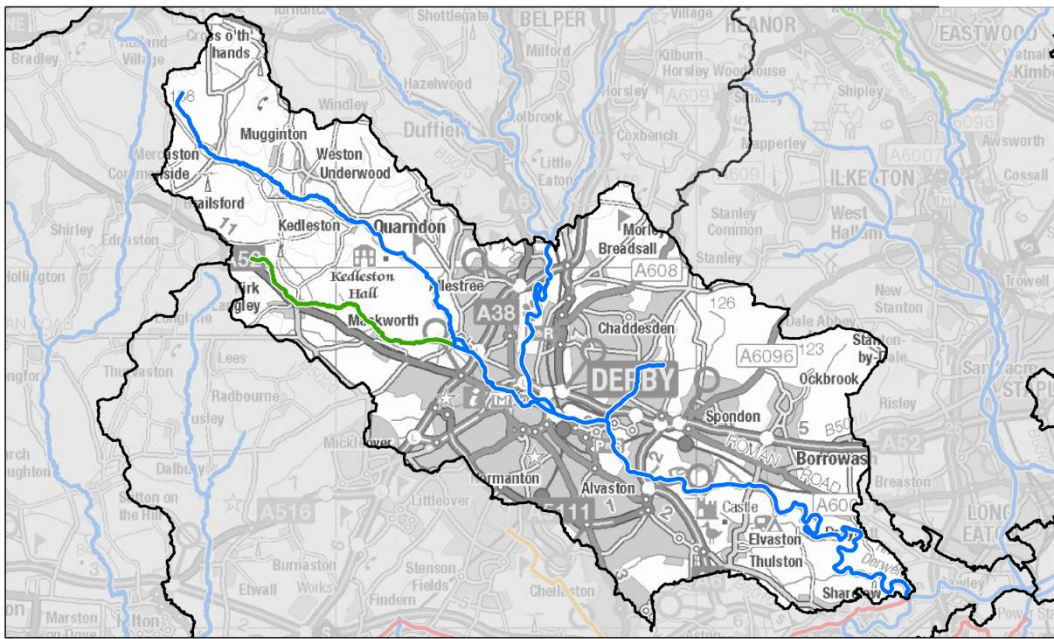


WFD Operational Catchment: Derwent Lower - Derbyshire  
Cycle 2 Ammonia Status 2015 (based on monitoring data to Dec 2014)



© Crown copyright and database rights 2014 Ordnance Survey 100024198  
© Environment Agency copyright and/or database rights 2014. All rights reserved.

WFD Operational Catchment: Derwent Lower - Derbyshire  
Cycle 2 Dissolved Oxygen Status 2015 (based on monitoring data to Dec 2014)



© Crown copyright and database rights 2014 Ordnance Survey 100024198  
© Environment Agency copyright and/or database rights 2014. All rights reserved.

WFD Operational Catchment: Derwent Lower - Derbyshire  
Cycle 2 Phosphate Status 2015 (based on monitoring data to Dec 2014)

